



**Acura  
Audi  
BMW  
Chrysler**



**Ford  
GM  
Honda  
Hyundai**



# **SPECIAL ORDER CATALOG**



**PARTNERS WITH  
CREST EAST COAST**



**Kia  
Lexus  
Mazda  
Mitsubishi**

TO SEARCH BY  
DESCRIPTION PRESS  
(CTRL+F)  
SIMULTANEOUSLY AND  
ENTER THE SEARCH  
WORD IN THE DIALOG  
BOX

**Nissan  
Subaru  
Toyota  
VW**



*Pictures in book are not  
actual size*



# Manufacturers by Page

Acura .....	2
Audi .....	52-59
BMW .....	3-4
Chrysler .....	5-8
Ford .....	9-14
Fuses .....	62
GM .....	15-24
Honda .....	25-26
Hyundai .....	27-29
Kia .....	27-29
Imports .....	30
Lexus .....	31-32
Mazda .....	33
Mercedes Benz .....	34-36
Miscellaneous .....	60
Mitsubishi .....	37
Nissan .....	38-40
Subaru .....	41-44
Toyota .....	45-51
VW .....	52-59
Wire Tie Down Screws .....	61

# Acura & Honda Clips

## CRX29654

ACURA & HONDA CABLE CLIP

91558-SE-003

Hood Release Cable Fuel Door Release

Cable and sliding Door Lock Cable Clip

Maximum Cable Diameter: 5mm

Overall Height in Closed Position: 17mm

Fits Into 7mm Hole

Replaces CRX15366

Acura CL, Legend, NSX, RL, TL, TL, TSX

& Vigor and Honda Accord Civic

Qty/25



## CRX25702

ACURA & HONDA MOULDING CLIP

WITH SEALER

91504-SP1-003

Rocker Panel & Fender Moulding Clip

With Sealer

Top Head Size: 16mm x 18mm

Bottom Head Size: 18mm x 20mm

Stem Length: 15mm

Fits Into 10mm Hole

Acura Legend, MDX, RL & ZDX and

Honda Civic, CR-V &

Odyssey 2012 - 1991

Honda: 91504-SP1-003

White Nylon

Qty/25



## CRX29926

ACURA & HONDA SCREW GROMMET

90107-S0X-A01

Screw Grommet

M4.8 (#10) Screw Size

Head Size: 16mm x 16mm

Stem Length: 7mm

Acura CL, MDX, RL, 3.2 CI

& 3.5RI and Honda Accord,

Pilot, Ridgeline & S2000

2001 - 1996

Honda: 90107-S0X-A01

Black Nylon

Qty/25



## CRX20747

HONDA COWL VENT RETAINER

9060-TA0-003

Blue Nylon Cowl Vent Retainer

Top Head Size: 10mm x 14mm, Bottom

Head Diameter: 16mm, Stem Diameter:

8mm, Stem Length: 13mm, Acura TSX &

ZDX & Honda Accord &

Fit 2008-on Qty/10



## CRX11069

HONDA WEATHERSTRIP CLIP

91505-TN8-003

White Nylon

Head Size: 5mm x 15mm

Bottom Head Diameter: 6.5mm

Stem Diameter: 7mm

Stem Length: 8.5mm

Acura TL and Honda Element, Odyssey &

Pilot 2003 - On

Qty/15



# BMW Clips

## CRX29868

*BMW & MERCEDES TUBULAR TYPE NUT*

*BMW: 51-44-7-780-135*

*Mercedes-Benz: 108-988-00-27*

Tubular Nut

Stud Size: 7mm

Head Diameter: 16mm

Stem Length: 16mm

Fits Into 8.5mm Hole

BMW, Mercedes-Benz &  
Universal

Natural Nylon

Qty/25



## CRX25719

*BMW & MERCEDES WIRE ROUTING  
CLIP*

7MM x 10MM

Inner Diameter: 7mm x 10mm

Fits Into 6mm Hole

BMW & Mercedes

Wire Routing Clips

Nylon

Qty/50



## CRX20936

*BMW & MERCEDES-BENZ MOULDING NUT*

*BMW: 16-13-1-176-747*

*Mercedes-Benz: 003-990-02-51*

Nylon Flange Nut

Stud Size: 5mm

10mm Hex, Flange Diameter: 16mm

Overall Height: 11mm

BMW & Mercedes-Benz 1997 - On

Black Nylon

Qty/25



## CRX25714

*BMW PUSH TYPE RETAINER- BLACK  
NYLON*

Bumper & Wheel Opening

Push-Type Retainer

Head Diameter: 15mm

Stem Length: 15mm

Fits Into 6.3mm Hole

BMW 2004 - On

Black Nylon

Qty/15



## CRX20941

*BMW WINDOW REGULATOR GUIDE*

*51321-938-884*

Window Regulator Guide

BMW 3 & 5 Series 1989 - On

White Nylon

Qty/2



## CRX20939

*BMW MOULDING CLIP- WHITE NYLON*

*51-13-1-960-054*

Moulding Clip

Width: 22mm

Length: 35mm

Stem Length: 11mm

BMW 1999 - 92

BMW: 51-13-1-960-054

White Nylon With Blue Rubber Boot

Qty/25



# BMW Clips

## CRX17078

*BMW PUSH TYPE RETAINER*

51-11-1-908-077

Head Diameter: 15mm

Stem Length: 15mm

Fits In 6.3mm Hole

BMW 1984 - On Push-Type Retainers

Nylon Qty/50



## CRX20946

*BMW MOULDING CLIP*

51-13-8-166-675

White Nylon With Blue

Rubber Boot

Moulding Clip

Width: 25.5mm

Length: 34mm

Stem Length: 11mm

BMW 2003 - 1995

Qty/25



## CRX20944

*BMW MOULDING CLIP*

51-13-2-251-394

White Nylon With Blue Rubber Boot

Moulding Clip

Width: 18mm

Length: 30.5mm

Stem Length: 10mm

BMW 1999 - 92

Qty/25



## CRX29913

*BMW RETAINER*

07147122913

Black Nylon Head Diameter:

20mm T10 Torx Drive Stem

Diameter: 7mm Stem Length:

33mm BMW 1, 3, 6 & X Series

2004 - On Qty/15



## CRX29916

*BMW TORX TRUSS HEAD TAPPING SCREW*

07147122913

Black Zinc Torx® Truss Head

Tapping Screw

M4.8-1.61 x 18mm

Head Diameter: 15mm

BMW 5, 6 & 7 Series

2011- 00

Qty/25



## CRX29914

*MINI COOPER MOULDING CLIP*

07-13-1-480-419

Black Nylon Top Head Size: 16mm x 20mm

Middle Head Diameter: 18mm

Bottom Head Diameter: 23mm

Stem Length: 19mm

Mini-Cooper 2002 - On

Qty/15





# Chrysler Clips

## CRX29112

*CHRYSLER BUMPER RETAINER*

68033794-AA

Bumper Retainer. Head Diameter: 35mm,  
Stem Length: 14mm, Overall Height: 28mm.  
Jeep Grand Cherokee 2008-on Qty/15



## CRX20774

*CHRYSLER & GM BUMPER & GRILL CLIP*

4806226-AA 6509288AA

Front & Rear Bumper and Grille Fastener  
#6 Screw Size Width: 10mm  
Overall Height: 18mm

Buick Lucerne and Cadillac CTS & STS  
2005 - On Chrysler 300, Dodge Nitro and  
Jeep Commander 2005 - On

Chrysler: 480622-AA; GM: 11562364

Zinc

Qty/15



## CRX25727

*CHRYSLER TAIL LIGHT GROMMET*

55156879-AB

Black Nylon

Head Size: 20mm x 31mm

Receives 10mm Ball Stud

Jeep Commander  
2006 - On

Qty/25



## CRX20404

*CHRYSLER MOULDING CLIP*

5189181-AA 5189181-AA

Front Fender Flare (Rear) Moulding Clip

With Sealer Top Head Size: 14mm x

40mm Bottom Head Size: 14mm x 18mm

Stem Length: 15mm

Jeep Commander 2006-On

O.E.M 5189181-AA

Black Nylon

Qty/10



## CRX21488

*CHRYSLER MOLDING CLIP*

68213168-AA

Black Nylon

Grille Moulding Clip

Flange Diameter: 20mm

Stem Diameter: 13mm

Qty/15

Stem Length: 12mm

Overall Length: 31mm

Dodge Ram 1500

2013 - On

Qty/15



# Chrysler Clips

## CRX20406

*CHRYSLER MOULDING CLIP*  
21589180-AA

Front Fender Flare (Front) Moulding Clip  
Top Head Size: 13mm x 31mm  
Bottom Head Size: 14mm x 22mm  
Stem Length: 22mm  
Jeep Commander 2006 - On  
Black Nylon  
Qty/15



## CRX29470

*CHRYSLER MOULDING CLIP*  
68225214AA

White Nylon Moulding  
Clip Head Size:  
11.5mm x 21mm Stem  
Length: 11mm Overall  
Height: 17mm Jeep  
Cherokee  
2014 - On  
Qty/50



## CRX25730

*CHRYSLER MOULDING CLIP*  
6508947-AA

Front Bumper Moulding Clip Black Nylon  
Top Head Size: 11mm x 32mm  
Bottom Head Size: 15mm x 20mm  
Stem Length: 20mm  
Fits Into 15mm Hole  
Jeep Patriot 2007 - On  
Black Nylon  
Qty/10



## CRX29640

*CHRYSLER PUSH TYPE RETAINER*  
0WX68XDB-AA

Door Trim Panel Push-Type Retainer  
Head Diameter: 22mm  
Stem Length: 10mm  
Fits Into 9mm Hole  
Chrysler 300M, Charger &  
Magnum 2005 - On  
Gray Nylon  
Qty/25



## CRX25715

*CHRYSLER PUSH TYPE RETAINER*  
6508643-AA

Tail Light Push-Type Retainer  
Large Head Diameter: 31.5mm  
Small Head Diameter: 20mm  
Stem Length: 23mm  
Fits Into a 10mm Hole  
Dodge Nitro and Jeep 2008 -On  
Black Nylon  
Qty/15



## CRX20770

*CHRYSLER TAIL LIGHT GROMMET*  
4784018-AA

Tail Light Assembly Grommet  
Head Diameter: 19mm  
Stem Length: 11mm  
Fits Into 12mm Hole  
Dodge Pick-Ups 1500 & 2500 Series  
2006 -On  
Black Nylon  
Qty/25



# Chrysler Clips

## CRX29649

CHRYSLER FRONT AIR SHIELD PUSH  
TYPE RETAINER

6508197-AA

W706092-S300

Black Nylon Front Air Shield,  
Splash Guard &  
Heat Shield

Push-Type Retainer

Head Diameter: 18mm

Stem Length: 18mm

Fits Into 6.4mm Hole

Dodge Ram 2006 - On Qty/25



## CRX29880

CHRYSLER FENDER FLARE &  
ROCKER MOULDING CLIP

68039280-AA

Black nylon fender flare & rocker  
moulding clip Top head size: 14mm x  
38mm, bottom head size: 16mm x 38mm,  
Stem length 14mm Fits into 10mm hole  
Jeep Wrangler JK & Wrangler Unlimited  
JK 2007-on Qty/25



## CRX28456

CHRYSLER TAIL LIGHT RETAINER

68061648-AA

Tail light Retainer

Top Head Dia: 15mm

Middle Head Dia: 17mm

Bottom Head Dia: 18mm

Stem Dia: 9mm

Stem Length: 13mm

Dodge Ram 2009-on

Qty/15



## CR11895

CHRYSLER PUSH TYPE RETAINER  
WITH SEALER

0650973AA

White & Black Nylon

Push-Type Retainer

With Sealer

Top Head Diameter: 16mm

Middle Head Diameter: 18mm

Bottom Head Diameter: 22mm

Stem Length: 16mm

Fits Into 9mm Hole

Chrysler 300 & Magnum  
and Jeep Grand Cherokee  
& Wrangler

2011 - On

Qty/15



## CRX29671

CHRYSLER Mounting Clip

6Top Head Size: 4mm x  
10.5mm

Bottom Head Diameter:  
11mm

Stem Length: 10mm

White Nylon

Fits Into 7mm Hole

Dodge Dart 2014 - On

Not Available from O.E.M

Qty/25





# Chrysler Clips

## CRX29650

CHRYSLER BUMPER PUSH TYPE  
RETAINER

6509960AA

W706092-S300

Bumper Push Type Retainer

Head Diameter: 18mm

Stem Length: 10mm

Fits Into 8mm Hole

Chrysler 6509960AA

300 2011 - On

Black Nylon

Qty/25



## CRX29653

CHRYSLER HEX HEAD SEMS TAPPING  
SCREW

6509539-AA

Phosphate M4.8-1.61 x 32mm

(#10 x 1-1/4")

19mm (3/4") Washer O.D. 8mm Hex

Chrysler Town &

Country and Dodge

Ram 2014 - 09

Qty/50



## CRX29655

CHRYSLER AND GENERAL  
PURPOSE RIVET

3/16" Diameter

Grip Range: 7/64" - 3/8"

Flange Diameter: 5/8"

Aluminum Rivet & Mandrel General  
Purpose

Qty/15



## CRX29657

CHRYSLER GRILLE FASTENER  
6027924

Radiator grille, panel upper support  
baffle retainer Chrysler Qty 100



## CRX29652

CHRYSLER ROCKER  
PANEL MOULDING CLIP  
4389940-AB

Rocker Panel Moulding

Clip Head Size 10mm x

20mm Stem Length:

14mm Fits Into 6mm Hole

Chrysler Sebring & Dodge

Avenger 2007 - On Black

Nylon Qty/10



## CRX29669

CHRYSLER GROMMET  
4806271-AA

Black Rubber

Head Diameter: 15mm

Stem Length: 21mm

Overall Length: 25mm

Fits Into 9mm Hole

Chrysler Mini-Van and

Jeep 200, Caliber,

Compass & patriot 2007 - On

Qty/15



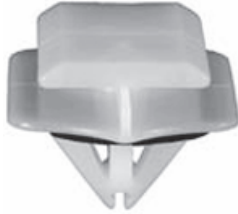
# Ford Clips

## CRX20394

*FORD MOULDING CLIP*

*Not available from OEM*

White Nylon Door cladding moulding clip with sealer. Top head size: 15mm x 20mm, Bottom Head Size: 20mm x 24mm, Stem Length: 11mm, Fits into 11mm hole. Ford Edge and Lincoln MKX 2007-on Qty/10



## CRX29324

*FORD MOULDING CLIP WITH SEALER*

*W715201-S300*

Rocker Panel Moulding Clip With Sealer

Top Head Size: 12mm x 20mm

Bottom Head Size: 15mm x 20mm

Stem Length: 15mm

Fits Into 10mm Hole

Ford Escape 2013 - On

Ford: W715201-S300

White Nylon

Qty/15



## CRX29648

*FORD MOULDING CLIP WITH SEALER*

*Not available from OEM*

Windshield Moulding Clip With Sealer

Top Head Size: 13mm x 13.5mm

Bottom Head Size: 12mm x 14mm

Stem Length: 9mm

Ford Explorer 2001 - On

Black & White Nylon

Qty/10



## CRX29917

*FORD MOULDING CLIP WITH SEALER*

*Not available from OEM*

O.E.M. Rocker Moulding Clip With Sealer

Top Head Size: 14mm x 18mm

Bottom Head Size: 14mm x 18mm

Stem Length: 15mm

Fits Into 9mm Hole

Lincoln MKS 2010 - On

White Nylon

Qty/10



## CRX13542

*FORD LICENSE PLATE AND INSTRUMENT  
PANEL LIGHT*

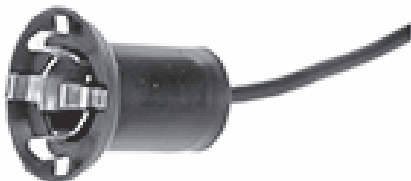
*Not available from OEM*

Bulb Nos. 51, 53, 55, 57 & 57X

For 5/8" Hole

Ford

Qty/10



## CRX12377

*FORD HOOD BUMPER*

*B7A-16758A*

Ford Hood Bumper

Qty/25



# Ford Clips

## CRX20920

FORD WINDSHIELD MOULDING CLIP

*Not available from OEM*

Head Size: 14.5mm x 30mm

Bottom Leg Width: 26mm

Ford Flex 2009 - On

White Nylon

Qty/25



## CRX27777

FORD HOOD INSULATION CLIP

W709688-S300

Black Nylon

Head Size: 28mm x 30mm

Stem Length: 14mm

Overall Height: 16mm

Ford Focus & Lincoln MKZ 2012 - On

Qty/25



## CRX15009

FORD YELLOW NYLON RETAINER

Yellow Nylon

Retainer

Top Head Diameter: 13mm

Bottom Head Diameter: 17.5mm

Stem Diameter: 10mm

Stem Length: 16mm

VW, Audi, SEAT, Skoda &

Ford Qty/25



## CRX19706

FORD FRONT BUMPER COVER

RETAINER

W707388-S300

9XG0-73-88X0

Black nylon front bumper cover moulding clip. Bottom head size: 18mm x 20mm, Stem length: 10mm, Fits into 8mm x 12mm hole Ford Escape 2001-on Mazda Tribute 2006-2001 Qty/10

## CRX29918

FORD MOULDING CLIP WITH SEALER

*Not available from OEM*

Fender & Rocker Moulding Clip With Sealer

Top Head Size: 14mm x 18mm

Bottom Head Size: 18mm x 21mm

Stem Length:

15mm

Fits Into 9mm

Hole

Ford Explorer

2011 - On

Gray Nylon

Qty/25



# Ford Clips

## CRX29649

*FRONT AIR SHIELD PUSH TYPE  
RETAINER*

6508197-AA  
W706092-S300

Black Nylon Front Air Shield,  
Splash Guard &  
Heat Shield  
Push-Type Retainer  
Head Diameter: 18mm  
Stem Length: 18mm  
Fits Into 6.4mm Hole  
Ford Taurus 2008 - On  
Dodge Ram 2006 - On Qty/25



## CRX29646

*BELT MOULDING CLIP*

*Not available from OEM*

White Nylon Belt Moulding Clip Width:  
25mm Length: 36mm Overall Height  
27mm Ford Edge  
2009-on  
Qty/15



## CRX21430

*FORD OIL DRAIN  
GASKET*

F4XY-6734-A

Oil Drain Plug Gasket  
Copper Crushable  
I.D.: 12mm, O.D.: 17.7mm  
Thickness: 3mm  
Used with M12-1.75 Oil Drain Plugs  
On Mercury Villager and Nissan 350Z &  
Sentra 2009 - 2000  
Qty/10



## CRX29644

*FORD HEATER HOSE COUPLER  
RETAINER*

1R3Z-18D434-BA

Heater Hose Coupler Retainer  
For Use With 3/4 Heater Hose  
Overall Height: 3/4  
Ford Mustang 2004-01  
and  
Ford F250-F550 Truck  
2007 - 03  
Gray Nylon  
Qty/10



## CRX20592

*FORD & GM RETAINER BLACK NYLON*  
11589181

W711687-S300

Bumper and Fender Apron Retainer  
Head Diameter: 18mm  
Stem Diameter: 7.5mm  
Stem Length: 20mm  
Ford Focus and GM Full-Size Pick -Up  
Trucks 2007 - On  
Ford: W711687-S300; GM: 11589181  
Black Nylon  
Qty/25

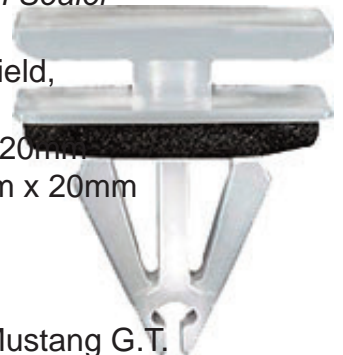


## CRX29662

*FORD Moulding Clip with Sealer*

W716352-S300

Black Nylon Front Air Shield,  
Splash Guard &  
Top Head Size: 12mm x 20mm  
Bottom Head Size: 12mm x 20mm  
Stem Length: 14mm  
White Nylon  
Fits Into 9mm Hole  
Ford Edge, Mustang & Mustang G.T.  
2015 - On  
Qty/25





# Ford Clips

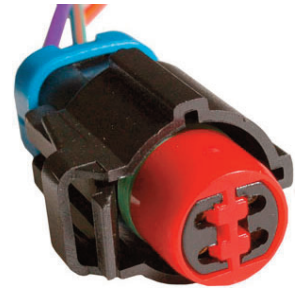
## CRX29906

*FORD SPECIALTY RIVET  
W702512-S900C  
1/4" (6.3mm) Diameter  
Grip: .110" - .189" (2.79mm - 4.8mm)  
Flange Diameter :1/2" (13mm)  
Steel Rivet ( Zinc ) & Steel Mandrel (Zinc)  
Ford F-150 Trucks With Aluminum Body  
2015  
Qty/10*



## CRX29921

*FORD WIRE HARNESS CONNECTOR  
A/C Clutch Cycling Pressure Switch  
Harness Connector Four 16 Ga Wire  
Leads Fits Switches F5VY-19E561-A,  
F3AZ-19D594-C, F5TZ-19D594-AA &  
YH-592 Ford 1990 - on  
Qty/1*



## CRX29923

*FORD WIRE HARNESS CONNECTOR  
FUEL INJECTOR  
Not supplied by OEM  
Fuel Injector Harness Connector  
One 16 Ga Wire Lead & One 18 Ga Wire  
Lead Models w/Oval Injector Covers  
Ford 1999 - on  
Qty/1*



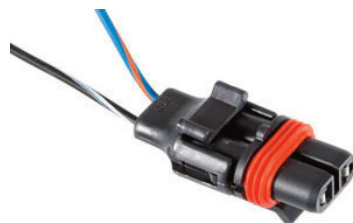
## CRX29925

*FORD BRAKE LIGHT SWITCH  
HARNESS CONNECTOR  
Brake Light Switch  
Ford  
1998 - On  
Harness Connector  
Qty/1*



## CRX29927

*FORD WIRE HARNESS CONNECTOR  
12102664  
1U2Z-14S411-YA  
88862264  
Fog & Front Lights  
Power Steering Oil Pressure Switch  
Harness Connector  
GM 2005 - 1986  
Ford 2004 - 1995 and  
Jeep Eagle 1994  
Qty/1*



## CRX29929

*FORD WIRE HARNESS CONNECTOR  
COIL TO IGNITION  
Not Supplied by OEM  
Coil to Ignition Harness Connector  
Two 18 Ga Wire Leads  
Ford 1977 -  
On  
Qty/10*





# Ford Clips

## CRX29932

FORD PUSH TYPE RETAINER

W710250-S300

Push-Type Retainer

Head Dia: 18mm

Stem Length: 18mm

Fits Into 8mm Hole

Ford 2007-On

Qty/25



## CRX29909

FORD MOULDING CLIP WITH SEALER

W716497-S300

Grey Nylon Bumper moulding clip with sealer. Top Head Size: 12mm x 20mm.

Bottom Head Size: 12mm x 24mm Stem

Length: 16mm Fits into 6mm hole, Ford

escape 2013-on Qty/10



## CRX29911

FORD PUSH TYPE RETAINER

W716510-S300

Lower Radiator Shield Push-Type Re-

tainers Head Diameter: 18mm Stem

Length: 12mm Fits Into 7mm Hole Ford

Fusion 2013 - On Black Nylon

Qty/10



## CRX29915

FORD RETAINER

W715951-S300

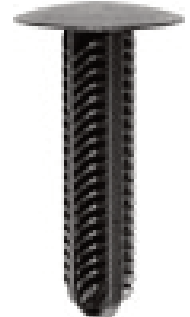
Black Nylon Head Diameter: 25mm

Stem Diameter: 11mm

Stem Length: 45mm

Ford Escape 2013-on

Qty/15



## CRX29905

FORD SPECIALTY RIVET WITH  
PLASTIC CAP

W713819-S900

5/32" (4mm) Diameter

Grip: 3/64" - 1/8" (1.2mm - 3.2mm)

Flange Diameter: 3/8" (9mm)

Aluminum Rivet (Black) With Plastic

Cap Steel Mandrel Cab & Exterior

Trim

Qty/25



## CRX10399

FORD SPECIALTY RIVET

W702554-S900C

1/4" (6.3mm) Diameter

Grip: .268" - .346 (6.8mm - 8.8mm)

Flange Diameter: 1/2" (13mm)

Steel Rivet (Zinc), Steel Mandrel (Zinc)

Ford F-150 Trucks With

Aluminum Body 2015 - On Qty/10



# Ford Clips

## CRX10400

*FORD SPECIALTY RIVET*

*W707638-S900C*

1/4" (6.3mm) Diameter

Grip: .060" - .138" (1.5mm - 3.5mm)

Flange Diameter: 1/2" (13mm) Qty/10

Steel Rivet (Zinc), Steel Mandrel

(Zinc) Ford F-150 Trucks With

Aluminum Body 2015 - On Qty/10



## CRX29901

*FORD PUSH TYPE RETAINER*

*N807673-S*

Black Nylon

Head Diameter: 14mm

Stem Length: 9mm

Fits Into 7mm Hole

Ford Explorer Sport Trac

2010 - 2007

Qty/10



## CRX29903

*FORD BUMPER COVER GROMMET*

*W708045-S300*

Rear Bumper Cover

Grommet Head Diameter:

15mm

Stem Length: 21mm

Fits Into 9.5mm Hole

Ford Expedition

2003 - On

Qty/25



## CRX29904

*FORD REPAIR HARNESS CIGAR LIGHTER LIGHTER*

Repair Harness Cigar Lighter, 2-18 ga 8"

GPT Wire Leads, GM Products -84 on

Qty/1



## CRX16989

*FORD OIL DRAIN PLUG RUBBER GASKET*

Oil Drain Plug Rubber

Gasket 11mm I.D.

18mm O.D.

2.6mm Thick

Oil Drain Plugs

Ford 1993 - On

Qty/10



## CRX29946

*FORD BODY SIDE LOWER GROMMET*

*KA80-51-PR6*

Body Side Lower

Wide Moulding

Grommet

Ford Probe 1993-On

Qty/10



## CRX29663

*FORD BACKUP LIGHTS HARNESS CONNECTOR*

For single filament wedge type bulbs Qty/1



# GM Clips

## CRX20597

GM FRONT BUMPER PUSH  
TYPE RETAINER

10426555

Top head dia: 24.5mm, Bottom  
head dia: 23.5mm Stem length  
36mm Fits into 10mm hole  
Natural Nylon Build Allure and  
Lacrosse Qty/15



## CRX20577

GM ROCKER MOULDING CLIP

25744385

Green Nylon Head Size: 22mm x 46mm,  
Stem Length: 17mm, Fits into a 10mm  
Hole Cadillac 1998-on Qty/15



## CRX20774

GM FRONT AND REAR BUMPER AND GRILLE  
FASTENER

11562364

4806226-AA

6509288AA

#6 Screw Size

Width: 10mm

Overall Height: 18mm

Buick Lucerne and Cadillac CTS & STS

2005 - On Chrysler 300, Dodge Nitro and Jeep

Commander 2005 - On

Zinc Qty/15



## CRX20592

GM BUMPER AND  
FENDER APRON

RETAINER

11589181

W711687-S300

Head Diameter: 18mm

Stem Diameter: 7.5mm

Stem Length: 20mm

Ford Focus and GM Full-Size Pick -Up

Trucks 2007 - On

Black Nylon Qty/25



## CRX21434

GM FRONT FENDER PANEL NUT

11610544

Zinc Organic

M6-1.0 Screw Size

Overall Height: 12mm

Buick Allure, LaCrosse & Regal

2012 - On

Qty/10



## CRX20483

GM COWL GRILLE RETAINER WITH  
SEALER

15931605

Black Nylon Cowl Grill Retainer with Sealer

Top Head Dia: 19.5mm, Middle Head Dia:

19.5mm, Bottom Head 18.5mm Stem Dia:

11mm, Stem Length: 16mm,

Chevrolet

Traverse 2010-on Qty/10



# GM Clips

## CRX21408

GM MOULDING CLIP

25775903

Rocker Moulding Clip With Sealer

Top Head Size: 12mm x 16mm

Bottom Head Size: 12mm x 20mm

Stem Length: 24mm

Fits Into 9mm Hole

GM Enclave, Traverse, Acadia & Saturn

Outlook 2007 - On

GM: 25775903

Green Nylon Qty/10



## CRX20573

GM DOOR MOULDING CLIP

10445899

Black Nylon Door Moulding Clip Top

Head Size: 14mm x 20mm, Bottom Head

Size: 15.5mm x 20mm Stem Length:

14mm Fits into 9mm Hole Chevrolet

Qty/15



## CRX20489

GM DOOR TRIM PANEL RETAINER

11610605

Gray Nylon Door Trim Panel Retainer Top

Head Dia: 13mm, Bottom Head Dia 17mm,

Stem Dia 9mm, Stem Length: 14mm Chevrolet

Cruze 2011-on Qty/25



## CRX29872

GM DOOR PANEL RETAINER AND

GROMMET

11571119

Yellow Nylon Top Head Dia: 19.5mm,

Retainer Bottom Head Dia: 19.5mm,

Retainer Stem Length: 26mm, Grommet

Flange Dia: 24mm, Grommet Stem

Length: 12mm, Fits

into 9mm Hole Buick

Enclave, Lucerne,

Cadillac DTS,

Traverse GM Vans,

Hummer Qty/15



## CRX29870

GM DOOR PANEL RETAINER AND GROMMET

11571118

White Nylon Retainer Top Head Dia: 19.5mm,

Retainer Bottom Head Dia: 19.5mm, Retainer

Stem Length: 26mm, Grommet Flange Dia:

24mm, Grommet Stem Length: 12mm, Fits into

9mm Hole Buick Enclave, Lucerne, Cadillac

DTS, Traverse GM Vans, Hummer Qty/15



# GM Clips

## CRX25716

GM PUSH TYPE RETAINER

11561874

Bumper Cover Push-Type Retainer

Head Diameter: 25mm

Stem Length: 29mm

Fits Into 7mm Hole

Chevrolet Malibu 2008 - On

Saturn Aura 2007 - On

Pontiac G6 2010 - On

GM: 11561874 Qty/15



## CRX21444

GM AIR SWITCH VALVE

12101856

GM 1991 - 93

Air Switch Valve Harness Connector

Qty/1



## CRX29453

GM FENDER MOULDING CLIP

94530742

White Nylon

Fender, Wheel, Side & Bumper

Moulding Clip With Sealer

Top Head Size: 11mm

x 15mm Bottom Head Diameter: 16mm

Stem Length: 10mm Fits Into

8mm Hole Saturn Vue

2008 - On Qty/15



## CRX29316

GM GENERAL PURPOSE RUBBER BUMPER

GM General Purpose Rubber Bumper Qty/25



## CRX29111

GM HOOD INSULATION RETAINER

11571159

Head Diameter: 30mm, Stem Diameter:

7.8mm Stem Length: 15mm Chevrolet

Cruze 2011-on Qty/25



## CRX21435

GM DOOR HINGE ROLLER

REPLACEMENT KIT

Door Hinge Roller Pin Kit

Repairs One Hinge

Drivers Side or Passengers Side Lower

Hinge Chevrolet Silverado 2011 - 2007

GMC Sierra 2011 -

2007 And Related

SUVs (T-900)

Greaseable

Stainless Steel





# GM Clips

## CRX21410

GM MOULDING CLIP

25774893

Door Moulding Clip

Top Head Size: 12mm x

16mm Bottom Head Size:

12mm x 20mm

Stem Length: 24mm

Fits Into 9mm Hole

Chevrolet Traverse 2010 -

On

Yellow Nylon Qty/15



## CRX29320

GM MOULDING CLIP WHITE NYLON

11569918

Roof Rail Moulding Clip With Sealer

Top Head Size: 13mm x 30mm

Stem Length: 13mm

Fits Into 7mm Hole

Buick Enclave & GMC

Acadia 2007 - On

White Nylon

Qty/15



## CRX29198

GM MOULDING CLIP WITH SEALER

11611375

White Nylon Moulding Clip with Sealer Top

Head Size 8mm x 18mm, Bottom Head Size:

15mm, Stem Length: 13mm, Fits into 8mm

Hole Cadillac Chevrolet and GMC 2014-13

Qty/15



## CRX21427

GM MOULDING FASTENER

11609651

Zinc M4.2 (#8) Screw Size

Stem Width: 13mm Head Size: 13.5mm x

20.5mm Overall Length: 22mm

Buick Enclave & Encore; Cadillac CTS,

Escalade, STS & XTS, Chevrolet Ava-

lanche, Camaro, Cobalt, Corvette, HHR,

Impala, Malibu, Monte Carlo,

Silverado, Suburban

Qty/15



## CRX29997

GM PUSH TYPE RETAINER WITH SEAL

95230842

Cowl Vent Push-Type Retainer With Sealer

Head Diameter: 18mm

Stem Length: 22mm

Fits Into 6.5mm Hole

Chevrolet Cruz 2011 - On

GM: 95230842

Black Nylon

Qty/15



## CRX25717

GM FRONT BUMPER PUSH TYPE

RETAINER

12337831

Head Size: 14MM x 26MM Stem Length:

14MM Fits 8MM Hole

Pontiac G6 2005-on

Black Nylon

Qty/50



# GM Clips

## CRX29317

GM PUSH-TYPE RETAINER BLACK NYLON

10382313

Sight Shield & Trim  
Push-Type Retainer  
Head Diameter: 24.5mm  
Stem Length: 13mm  
Fits Into 9mm Hole  
Cadillac STS, Pontiac  
Solstice and Saturn Sky  
2009 - 05  
Black Nylon Qty/10



## CRX20591

GM RETAINER LIGHT GRAY NYLON

89026634

Headliner Retainer  
Head Diameter: 33mm  
Stem Diameter: 8mm  
Stem Length: 41mm  
Chevrolet Impala 2010 -  
Light Gray Nylon  
Qty/25



## CRX20481

GM RETAINER

11610606

Door Trim Panel Retainer  
Top Head Diameter: 15mm  
Bottom Head Diameter: 17mm  
Stem Diameter: 9mm  
Stem Length: 14mm  
Chevrolet Cruz 2011 - On  
Yellow Nylon  
Qty/25



## CRX20011

GM RETAINER NUT BLACK NYLON

11610748

Grille Retainer Nut  
13mm Hex  
Washer O.D.: 25mm  
GM 2010 - On  
Qty/25



## CRX20593

GM SPECIALTY GROMMET WHITE NYLON

25704358

Rear Bumper Screw Grommet w/ Sealer  
M6.3 (1/4 or #14) screw Size  
Stem Length 23mm  
Cadillac CTS & SRX  
Qty/10



## CRX21422

GM ROCKER MOULDING CLIP

11571175

Gray Nylon Rocker Moulding Clip With  
Sealer  
Top Head Size: 12mm x 20mm  
Bottom Head Size: 12mm x 20mm  
Stem Length: 11mm  
Fits Into 9mm Hole  
Chevrolet Traverse 2010 - On  
GM: 11571175  
Gray Nylon  
Qty/15

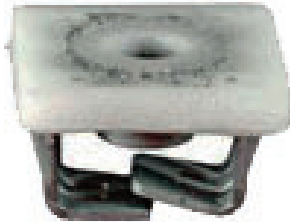


# GM Clips

## CRX21424

GM SPECIALTY NUT WITH PLASTISOL PAD  
11562503

Zinc Organic  
Screw Size: M6-1.0  
Head Size: 13mm x 13mm  
Stem Length: 8mm  
Chevrolet Truck &  
GMC 2008 - On  
Qty/10



## CRX29874

GM SPECIALTY NUT WITH SILICONE PAD  
11610157

Center Console Door, Front Lights, Grille,  
Instrument Panel & Lift Gate Nut With  
Silicone Pad M4.2-1.41 (#8) Screw Size  
Cadillac CTS, Chevrolet Corvette,  
Equinox, Malibu & Traverse, Hummer H3,  
Pontiac G6 and Saturn Ion  
2012 - 2003  
Zinc Organic Qty/10



## CRX29920

GM TAIL LIGHT GROMMET W/ SEALER  
11561987

Tail Light Grommet With Sealer  
Head Diameter: 24mm  
Stem Length: 22mm  
Overall Length: 24.5mm  
Cadillac Escalade and  
Chevrolet Avalanche 2001 -  
2007  
Black Nylon  
Qty/15



## CRX21426

GM SPECIALTY PUSH-IN NUT  
11609952

Magni-565 Plating  
Screw Size: M4.2-1.41 (#8)  
Head Size: 6mm x 16mm  
Overall Height: 7mm  
Cadillac Escalade,  
Chevrolet Tahoe  
and GMC Yukon  
2007 - On  
Qty/25



## CRX29881

GM WIRE HARNESS CONNECTOR  
88953358

Harness Connector  
With Seven 12 Ga. 12 Leads For Blower Motor  
Resistors 89019088, 89019089 & 89019100 an  
various Relays, Switches & Actuators  
GM Cars and Light & Medium Duty Trucks  
1990 - On  
Qty/1



## CRX29200

GM TRIM PANEL GROMMET WITH  
SEALER  
10351052

White nylon trim panel  
grommet with sealer.  
Head size: 12mm x  
14.5mm Stem Length:  
15mm, Fits into 7mm  
Hole Cadillac Chevro-  
let Camero and  
Corvette and Pontiac Firebird 2004-on  
Qty/15



# GM Clips

## CRX29318

*GM GRAY NYLON MOULDING CLIP WITH SEALER*

11609923

Top Head Size: 12mm x 20mm

Bottom Head Size: 12mm x 24mm

Stem Length: 16mm

Chevrolet Camaro and Pontiac G6

2005 - on Qty/15



## CRX20013

*GM GRILL RETAINER*

11610747

Black Nylon

Grille Retainer

Cadillac SRS & SRX and

Chevrolet Camaro

2010 - On

Qty/25



## CRX25698

*GM METRIC BUMPER FASCIA*

25705182

Black Nylon

M9.5 x 46mm

Square Drive Truss Head

22mm Head Diameter

GM Qty/25



## CRX20595

*GM PANEL INSTRUMENT FASTENER*

15683327

Phosphate Front Door Interior Trim and Instrument Panel Fastener. Width: 13/16", Length: 15/16" Chevrolet & GMC Trucks

2003-on

Qty/10

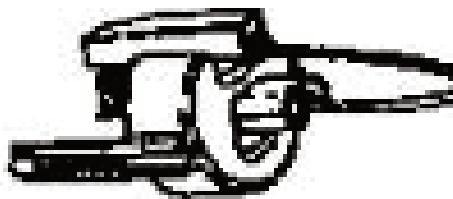


## CRX29904

*GM REPAIR HARNESS CIGAR LIGHTER*

Repair Harness Cigar Lighter, 2-18 ga 8" GPT

Wire Leads, GM Products -84 on Qty/1



## CRX29659

*GM TORX PAN HEAD SEMS TAPPING SCREW WITH DOG POINT*

11570637

Torx, Pan Head Sems Tapping Screw W/ Dog Point

M4.2-1.41 x 20mm (#8x25/32) 17mm

(11/16) Washer OD Black Zinc

Black

Qty/50





# GM Clips

## CRX29661

GM U TYPE EXTRUDED NUT

11515638

Zinc Organic M4.2-1.41 (#8) Screw Size  
Locking Thread

Panel Range: .65mm-3.80mm (0.25" - .150")

Center Of Hole To Edge: 15mm

GM

Qty/25



## CRX26663

GM MOULDING CLIP WITH SEALER

11611079

Gray Nylon Lower Door & Fender Moulding  
Clip With Sealer Top Head Size: 7.5mm x

11mm Bottom Head Diameter: 15mm Stem

Length: 14mm Fits Into

9mm Hole Chevrolet

Volt 2011 - On Qty/10



## CRX26665

GM MOULDING CLIP WITH METAL  
REINFORCEMENT

11611623

Blue Nylon Top Head Size: 17mm x 24mm

Bottom Head Size: 14mm x 28mm Stem

Length: 10mm Cadillac ATS & Escalade,

Chevrolet Corvette,

Impala & Malibu

and GMC Sierra &

Yukon 2013 - On

Qty/10



## CRX26661

GM MOULDING CLIP WITH SEALER

11569921 15864780

Yellow Nylon

Top Head Size: 9.5mm  
x 20mm

Bottom Head Size:

14mm x 20mm Stem

Length: 20mm Fits Into

9mm Hole Cadillac

ATS & CTS 2013 - On

Qty/10



## CRX26664

GM MOULDING CLIP WITH SEALER

11611435

White Nylon Top Head Size: 22mm x 45mm

Bottom Head Size: 25mm x 37mm

Stem Length: 15mm Fits Into 10mm Hole

Cadillac, Chevrolet & GMC 2014-13

Qty/10



## CRX26662

GM MOULDING CLIP WITH SEALER

11546635 11612122

Yellow Nylon Top Head Size: 9mm x 20mm

Bottom Head Size:

14mm x 20mm

Stem Length: 14mm

Fits Into 9mm Hole

Cadillac ATS & CTS

2013 - On

Qty/10





# GM Clips

## CRX26667

*GM SPECIALTY PUSH IN NUT*

11518937

Zinc Organic Radiator Grille & Front End Panel

Nut Thread Size: M6-1.0

Overall Height: 11mm

Buick Allure & LaCrosse, Chevrolet Impala

& Monte Carlo, GMC

Sierra & Yukon and

Pontiac Grand Prix

2004 - On Qty/10



## CRX26669

*GM RETAINING CLIP*

11546805

Black Nylon

Head Diameter: 20mm

Stem Length: 15mm

Snaps Into 8mm Hole

Chevrolet Colorado

2015 - On

Qty/50



## CRX26666

*GM MOULDING CLIP WITH METAL REINFORCEMENT*

24405740

Blue Nylon Top

Head Size: 17mm

x 20mm Bottom

Head Size: 14mm

x 28mm Stem

Length: 11mm

Buick Allure, Lacrosse, Regal & Verano,

Cadillac XTS, Chevrolet Camaro, Caprice,

Cruze, Malibu, Sonic & Volt, Pontiac G8 and

Saturn Astra 2008 - On Qty/15



## CRX26670

*GM ROOF TRANSVERSE MOULDING CLIP*

1729250

Roof Moulding

Moulding Clips

Nylon 1976-on GM

Qty/25



## CRX26604

*GM GRILLE CLIP*

5482087

GM Grille Clip

Overall Height: 14mm (9/16")

Chevrolet Equinox

2009 - 05

White Nylon

Qty/25



## CRX26614

*GM MOULDING CLIP WITH SEALER*

11610495

White Nylon Top Head Size: 12mm x 20mm

Bottom Head Size:

12mm x 24mm

Stem Length: 14mm

Fits Into 9mm Hole

Chevrolet Camaro

2010 and Pontiac G6

& Grand Prix 2004 -

On

Qty/15



# GM Clips

## CRX26615

*GM MOULDING CLIP WITH SEALER*

25796285

Moulding Clip With Sealer

Top Head Size: 6.5mm x 15mm

Bottom Head Size: 13mm x 26mm

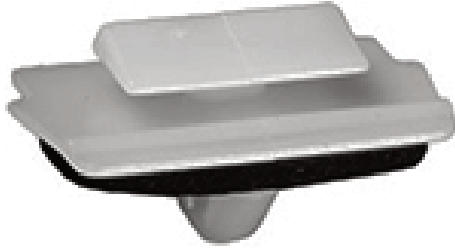
Stem Length: 8mm

Fits Into 7mm Hole

Cadillac CTS & Chevrolet Silverado 2007 - On

White Nylon

Qty/15



## CRX26616

*GM POZI DRIVE SEMS TAPPING SCREW*

11609762

M4.2-1.41 x 25mm

Washer Diameter: 17mm

Black Zinc Chevrolet

Equinox, GMC Acadia &

Terrain and Saturn Outlook

2007 - On

Qty/50



## CRX20817

*GM SPECIALTY RIVET*

92139150

5/32" (4mm) Diameter

Grip Range: 11/64" - 11/32" (4.4mm - 8.5mm)

Flange Diameter: 9/32" (7.1mm) Aluminum

Rivet Stainless Steel Mandrel Chevrolet

Camaro 2012 - On Qty/25



## CRX21437

*GM DOOR HINGE PIN AND BUSHING KIT*

12338074 15562609 15562610 15653790

15691493 15964971 15964972 16632192

16632193

Door Hinge Pin & Bushing Kit

Will Repair One Hinge, Contains one pin, one

eachf Bushings and one pin retainer GM S & T

Trucks 1994 - On qty/1



## CRX26658

*GM HEX HEAD SEMS*

*BODY BOLT WITH DOG*

*POINT*

11502618

Phosphate

Hex Head Sems® Body

Bolt

With Dog Point

M4-.7 x 16mm

Hex Size: 7mm

Washer Diameter: 13mm

GM Qty/50



# Honda Clips

## CRX29474

*HONDA TRIM PANEL RETAINER*

91560-S0X-A01

Trim Panel Retainer With Sealer

Top Head Diameter: 13mm

Middle Head Diameter: 16.5mm

Stem Diameter: 9.5mm

Stem Length: 11mm

Honda Accord, CR-V, Fit & Odyssey

2012 - 1999

White Nylon Qty/15



## CRX25718

*HONDA CENTER PILLAR SCREW GROMMET*

91620-SR2-003

Screw Size: #4

Honda

Screw Grommets

Nylon Qty/10



## CRX29476

*HONDA HOOD INSULATION RETAINER*

91501-SWA-003

Black Nylon

Hood Insulation

Retainer

Honda Civic 2012-on

Qty/25



## CRX20743

*HONDA MOULDING CLIP*

75306-SZA-A01

White Nylon Moulding Clip Top Head

Size: 7.5mm x 10mm Bottom Head Size:

9.5mm Overall Height: 16mm Honda Pilot

2011-09

Qty/15



## CRX20572

*HONDA WEATHERSTRIP RETAINER*

91567-S3M-000

Black Nylon Weatherstrip Retainer. Head

Dia: 10mm, Stem

Dia: 5.5mm Stem

Length: 7mm Honda

Accord, Civic &

Odyssey 2011-03

Qty/25



## CRX20745

*HONDA MOULDING CLIP WITH SEALER*

91503-S3Y-003

Rocker, Pillars, Floor & Exterior Trim Moulding Clip With Sealer Top

Head Size: 11mm x 13mm Bottom Head Size: 15.5mm x 19mm

Stem Diameter: 12mm Stem Length: 19mm Honda Insight 2006 -

2000

White Nylon Qty/10



# Honda Clips

## CRX29115

*HONDA PUSH TYPE RETAINER*  
91503-SHJ-A01  
Front Bumper Push-Type Retainer  
Head Diameter: 20mm  
Stem Length: 13mm  
Fits Into 10mm Hole  
Honda Odyssey 2010 - 05  
Black Nylon  
Qty/10



## CRX29472

*HONDA PUSH TYPE RETAINER*  
9101-TR0-003  
Fender Push-Type Retainer  
Head Diameter: 20mm  
Stem Length: 10mm  
Fits Into 8mm Hole  
Honda Civic 2012 - On  
Black Nylon  
Qty/25



## CRX25729

*HONDA RETAINER BLACK NYLON*  
90671-S0D-003ZK  
Trunk Lid & Interior Trim Retainer  
Head Diameter: 18mm  
Stem Diameter: 7mm x 7mm  
Stem Length: 13mm  
Honda Accord 2010  
Black Nylon  
Qty/25



## CRX20749

*HONDA PUSH TYPE RETAINER GRAY NYLON*  
91550-S50-000ZK  
Push-Type Retainer  
Head Diameter: 16mm  
Stem Length: 14mm  
Fits Into 7mm Hole  
Honda Civic, CR-V, Element & Insight 2006 - 2000  
Gray Nylon  
Qty/15



## CRX25728

*HONDA RETAINER-ORANGE NYLON*  
90602-SAA-003  
Cowl Vent & Radiator Support Retainer  
Top Head Diameter: 12mm Middle Head Diameter: 16mm Bottom Head Diameter: 18mm  
Stem Diameter: 9.7mm  
Stem Length: 14mm  
Honda CRV & Fit  
2003 - On  
Orange Nylon Qty/15



## CRX21436

*HONDA TRIM PANEL RETAINER WITH SEALER*  
WHITE NYLON  
91560-S0X-A01  
Trim Panel Retainer With Sealer Top Head Diameter: 13mm Middle Head Diameter: 16.5mm  
Stem Diameter: 9.5mm  
Stem Length: 11mm  
Honda Accord, CR-V, Fit & Odyssey 2012 - 1999  
Qty/15





# Hyundai & Kia Clips

## CRX29882

*HYUNDAI HEADLINER AND TRIM PANEL  
RETAINER*

85849-3B000

White Nylon

Overall Length: 19.5mm

Hyundai

2001 – On

Qty/25



## CRX29884

*HYUNDAI & KIA PUSH TYPE RETAINER*

86155-2H100

Black Nylon

Head Diameter: 15mm

Stem Length: 10mm

Fits Into 7mm Hole

Hyundai Genesis & Veracruz  
and Kia Rio

2009 – On

Qty/15



## CRX29886

*HYUNDAI & KIA TRIM PANEL RETAINER*

(82315-27000)

Pink Nylon

Trim Panel Retainer

Overall Length: 17mm

Hyundai &

Kia 2003 – On

Qty/15



## CRX29194

*HYUNDAI BODY SIDE MOULDING NYLON  
NUT*

87714-FD200 87756-1C000

M4.2 (#8) Screw Size,

Head Size: 13mm x 13mm

Stem Length: 10mm

Hyundai Veracruz and

Kia Rio 2009-on 15/pkg



## CRX29865

*HYUNDAI / KIA NYLON U-TYPE NUT*

86825-28000

Black Nylon

Nylon "U" Nut

M6 (#14) Screw Size

Panel Size: Up To 1.5mm

Center Of Hole To Edge:

8mm Hyundai Accent & Elantra

and Kia 1995 – On Qty/25



## CRX29924

*KIA WHEEL FLARE AND BODY SIDE  
MOULDING CLIP*

87756-3E500

Red Nylon Wheel Flare &

Body Side Moulding Clip

With Sealer Top Head Size:

11mm x 13mm Bottom Head

Size: 12mm x 20mm

Stem Length: 10mm

Forte Koup & Sorrento 2009 – On Qty/15



## CRX29888

*KIA & HYUNDAI MOULDING CLIP*

Body Side Moulding Clip With Sealer

Head Size: 8mm x 22mm

Stem Length: 10mm

Hyundai Sonata and

Kia Magentis & Optima

2006 - On

Black Nylon

Qty/15



## CRX29192

*HYUNDAI BODY SIDE MOULDING CLIP*

87719-3D000

White Nylon, Body Side Moulding Clip with

Sealer, Small Head Size: 6mm x 14mm, Base

Dia: 14mm, Overall Height; 6mm Elantra and

Sonata 2002-on 15/pkg





# Hyundai & Kia Clips

## CRX29889

*HYUNDAI MOULDING CLIP WITH SEALER*  
87758-3L000

Molding Clip With Sealer  
Top Head Size: 16mm x 18mm  
Bottom Head Size: 18mm x 20mm  
Stem Length: 15mm With Sealer  
Hyundai Azera & Genesis 2009 - O  
Blue Nylon  
Qty/15



## CRX29196

*HYUNDAI ROCKER MOULDING GROMMET*  
*W/SEALER*

87759-27000  
Yellow Nylon Rocker  
Moulding Grommet with  
Sealer M4.2 (#8) Screw  
Size Head Size 17mm x  
25mm Stem Length: 16mm  
Accent Genesis Santa Fe Sonata Tiburon and  
Veracruz 1995-on 15/pkg



## CRX20739

*HYUNDAI/KIA MOULDING CLIP*  
86434-4A000

Hood Seal Retainer  
Head Size: 6mm x 16mm  
Stem Diameter: 8mm  
Stem Length: 14mm  
Hyundai, Elantra, Sonata &  
Tucson and Kia Sportage  
2009 - On Black Nylon Qty/50



## CRX20741

*HYUNDAI / KIA MOULDING CLIP*  
86438-4A100

Hood Seal Retainer  
Head Size: 5mm x 13mm  
Stem Diameter: 8mm  
Stem Length: 11mm  
Hyundai Elantra & Tucson  
and Kia Forte & Sportage  
2009 - On  
Black Nylon Qty/50



## CRX29987

*HYUNDAI MOULDING CLIP WITH SEALER*  
87702-H1000

Rocker Moulding Clip With  
Sealer Top Head Size:  
11mm x 15.5mm Bottom  
Head Diameter: 16mm  
Stem Length: 12mm  
Hyundai Genesis &  
Sonata 2009 - On  
White Nylon Qty/15



## CRX20488

*KIA FRONT BUMPER*  
*MOULDING CLIP*  
86359-33500

White Nylon Front Bumper  
Moulding Clip Top Head Size  
10mm x 15mm, Bottom Head  
Size: 16mm x 18mm Stem  
Length: 9mm Kia Spectra  
2009-04 Qty/25



## CRX29885

*HYUNDAI ROCKER MOULDING CLIP WITH*  
*SEALER*

87758-35000  
Yellow Nylon Rocker Moulding Clip with Sealer  
Top head size: 10mm x 11mm, Bottom head size:  
14mm x 19mm, Stem length: 10mm, Accent,  
Santa Fe and Tiburon 1995-on Qty/15



# Hyundai & Kia Clips

---

## **CRX29891**

*HYUNDAI AND KIA MOULDING CLIP  
WITH SEALER*

*87756-1F000*

Blue Nylon

Top Head Size: 10mm x 12mm

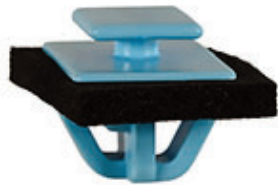
Bottom Head Size: 14mm x 20mm

Stem Diameter: 14mm

Stem Length: 10mm

Hyundai Santa Fe 2013 - On Kia Sportage  
2011 - On

Qty/25



## **CRX21439**

*KIA RETAINER*

*84747-2L000*

White Nylon Overall Length: 21mm Hyundai  
Elantra, Entourage, Sonata & Volster 2006 -  
On Kia Forte, Sorrento & Soul 2010 - On  
Qty/50



# Imports Clips

## CRX29902

*PUSH MOUNT CABLE TIES*

91560-S0X-A01

Trim Panel Retainer With Sealer

Top Head Diameter: 13mm

Middle Head Diameter: 16.5mm

Stem Diameter: 9.5mm

Stem Length: 11mm

Honda Accord, CR-V, Fit & Odyssey

2012 - 1999

White Nylon Qty/15



## CRX25718

*HONDA CENTER PILLAR SCREW*

*GROMMET*

91620-SR2-003

Screw Size: #4

Honda

Screw Grommets

Nylon Qty/10



## CRX29476

*HONDA HOOD INSULATION RETAINER*

91501-SWA-003

Black Nylon

Hood Insulation

Retainer

Honda Civic 2012-on

Qty/25



## CRX20743

*HONDA MOULDING CLIP*

75306-SZA-A01

White Nylon Moulding Clip Top Head

Size: 7.5mm x 10mm Bottom Head Size:

9.5mm Overall Height: 16mm Honda Pilot

2011-09

Qty/15



## CRX20572

*WEATHERSTRIP RETAINER*

91567-S3M-000

Black Nylon Weatherstrip Retainer. Head

Dia: 10mm, Stem

Dia: 5.5mm Stem

Length: 7mm Honda

Accord, Civic &

Odyssey 2011-03

Qty/25



## CRX20745

*HONDA MOULDING CLIP WITH SEALER*

91503-S3Y-003

Rocker, Pillars, Floor & Exterior Trim Moulding Clip With Sealer Top

Head Size: 11mm x 13mm Bottom Head Size: 15.5mm x 19mm

Stem Diameter: 12mm Stem Length: 19mm Honda Insight 2006 -

2000

White Nylon Qty/10



# Lexus Clips

## CRX29120

*LEXUS BUMPER COVER CLIP*

53879-50020

Black Nylon, Width: 35mm, Length: 25mm

Lexus GS, IS & LS 2007-on Qty/10



## CRX29119

*LEXUS BUMPER COVER PIN RETAINER*

47749-50090

Black Nylon, Head Dia: 10mm, Stem

Length: 24mm, Lexus GS, IS and LS

2007-on

Qty/15



## CRX21423

*LEXUS & TOYOTA MOULDING CLIP*

*PINK NYLON*

90467-12080

Door Trim, Instrument Panel,  
Rear Deck Trim & Roof Garnish  
Trim Moulding Clip

Overall Height: 21mm

Lexus ES 350, GX 460, RX 330

& RX 450H and Toyota Avalon,

Camry, Corolla, Echo, FJ

Cruiser, Highlander, Matrix, Prius,

RAV 4, Sequoia, Sienna, Tacoma, Tundra

Qty/25



## CRX23674

*LEXUS WEATHERSTRIP RETAINER*

90467-04034

White Nylon

Lexus CT 200H, HS 250H, IS F,

IS 250, IS 350, LS 460, LS 600H,

RX 350, RX 400H & RX 450H and

Toyota Avalon, Corolla, Highlander,

Matrix, Prius, RAV-4, Scion & Venza

2003 - On

Qty/25



## CRX29922

*LEXUS WINDSHIELD MOULDING CLIP*

75545-53011

Blue nylon windshield moulding clip Width:

15mm, length: 55mm Lexus GX460,

IS250/350 IS F2006-on Qty/5



## CRX25732

*LEXUS MOULDING CLIP WITH SEALER*

90467-08196

Moulding Clip With Sealer

Head Size: 16mm x 22mm

Stem Length: 19mm

Overall Length: 27mm

Lexus GX470 2009-03 Yel-

low Nylon Qty/25



# Lexus Clips

---

## **CRX23675**

*LEXUS GRILLE CLIP*

90467-10190

Grille Clip

Top Head Size: 10mm x  
10mm

Bottom Head Diameter:  
15mm

Stem Diameter: 10mm

Stem Length: 10mm

Lexus RX 330, RX 350 & RX 400 1999 - 2009

Black Nylon Qty/25



## **CRX25741**

*LEXUS PILLAR GARNISH MOULDING  
CLIP*

90467-09204

Front Body Pillar Garnish Moulding Clip

Overall Height: 14mm

Lexus GS 300, GS 400, GS 460, GX 470,

RX 330, RX 350, RX 400 & RX 450 and

Toyota Camry, Highlander, Prius & Si-

enna 2012 - 1998 White Nylon Qty/25



## **CRX25737**

*LEXUS FRONT BUMPER BRAKET  
RETAINER*

90467-05125

Front Bumper Bracket

Retainer Head Diameter:

16mm Stem Diameter:

4.7mm x 4.7mm

Stem Length: 12mm

Lexus GS 300, GS 450h

& LS 400 1995 - On

90467-05125

Black Nylon Qty/25





# Mazda Clips

## CRX25706

MAZDA ROCKER MOULDING  
RETAINER WITH SEALER

TD12-1-SJ3A

Gray Nylon

Rocker Moulding Retainer

With Sealer

Mazda 6 GT

2010 - On

Qty/15



## CRX29322

MAZDA TRIM PANEL  
RETAINER

B003-68-865-00

Black Nylon

Trim Panel Retainer

Head Diameter: 15mm

Stem Diameter: 6.5mm

Stem Length: 14mm

Mazda MPV

1998 - 89 Qty/50



## CRX29756

MAZDA TRUNK AND  
CARPET RETAINER

G032-68-865A-00

Black Nylon Trunk and Carpet

Retainer Head Dia: 20mm,

Stem Dia: 7mm, Stem Length:

15mm Mazda B2000 b2600

CX7, 9, Miata Millenia

MX3,5,6, 626 929

2012-1987

Qty/25



## CRX19706

MAZDA FRONT BUMPER  
COVER  
RETAINER

W707388-S300

9XG0-73-88XD

Black nylon front bumper cover  
moulding clip. Bottom head sie:

18mm x 20mm, Stem length:

10mm, Fits into 8mm x 12mm

hole Mazda Tribute 2006-2001

Qty/10



## CRX25699

MAZDA WEATHERSTRIP RETAINING CLIP  
BP4K-58-762

Black Nylon

Weatherstrip Retaining Clip Mazda

2007 - On Qty/25



## CRX29946

MAZDA BODY SIDE  
LOWER GROMMET

EA01-50-048

Body Side Lower

Wide Moulding Grommet

Ford Probe 1993-On Qty/10



## CRX29864

MAZDA WEATHERSTRIP RETAINING  
CLIP

J001-56-741

Black Nylon Weatherstrip Retaining Clip

Head Diameter: 14mm, Stem Diameter:

6.5mm, Stem Length: 10mm Mazda CX-7,

Millenia, MPV, 3, 6 & 626 2001-1995

Qty/25



## CRX25705

MAZDA NYLON NUT  
B455-56-135

Nylon U Nut Grey Nylon M4.8 (#10)

Screw Size Center Of Hole To Edge:

11mm Panel Range: Up To 1mm Mazda 2, 3, 5, 6, 323, 626,

929, CX-7, CX-9, Miata, Millenia, MPV, MX-3, MX-5, Protage

RX-7 & RX-8

2014 -1992 Qty/25



# Mercedes Benz Clips

## CRX29868

*MERCEDES TUBULAR TYPE NUT*

*Mercedes-Benz: 108-988-00-27*

Tubular Nut

Stud Size: 7mm

Head Diameter: 16mm

Stem Length: 16mm

Fits Into 8.5mm Hole

BMW, Mercedes-Benz  
& Universal

Natural Nylon

Qty/25



## CRX25719

*MERCEDES WIRE ROUTING CLIP*

7MM x 10MM

Inner Diameter: 7mm x 10mm

Fits Into 6mm Hole

BMW & Mercedes

Wire Routing Clips

Nylon

Qty/50



## CRX20936

*MERCEDES-BENZ MOULDING NUT*

*Mercedes-Benz: 003-990-02-51*

Nylon Flange Nut

Stud Size: 5mm

10mm Hex, Flange Diameter: 16mm

Overall Height: 11mm

BMW & Mercedes-Benz 1997 - On  
Black Nylon

Qty/25



## CRX20908

*MERCEDES BENZ MOULDING CLIP*

*001-988-49-81*

White Nylon

Moulding Clip

Head Size: 16mm x 16mm

Overall Length: 21.5mm

Mercedes-Benz 124 & 201 1995 - 84

Qty/25



## CRX29998

*MERCEDES BENZ SEMS TAPPING  
SCREW*

*201-990-05-36*

Black E-Coat

M4.8-1.61 x 20mm (#10 x 25/32)

Hex Head Sems

26mm Washer O.D.

8mm Hex Front Bumper &  
Moulding Strip

Qty/25



## CRX25710

*MERCEDES BENZ PUSH TYPE  
RETAINER*

*0009-91-59-40*

Black Nylon & Santoprene Rubber

Head Diameter: 11mm

Stem Length: 16mm

Fits Into 6mm Hole

Mercedes-Benz CLS55,  
CLS500, Class, E Class &  
Slk Class 2006-On Qty/15



# Mercedes Benz Clips

## CRX25726

MERCEDES PUSH TYPE RETAINER

124-990-07-92

Hd : 11mm x 14mm

Stem Length: 8mm

Fits 7 x 8mm Hole

Mercedes 1986 - On

Push-Type Retainers

Nylon Qty/25



## CRX25725

MERCEDES PUSH TYPE RETAINER

BLACK NYLON

000-990-84-92

Push-Type Retainers

Head Dia: 10mm

Stem Length: 10mm

Fits Into 6mm Hole

Mercedes 2005-On Qty/25



## CRX20902

MERCEDES-BENZ MOULDING CLIP

001-988-44-81

Front Fender Moulding Clip

Head Size: 12mm x 16mm

Stem Length: 7mm

Overall Height: 16mm

Mercedes-Benz 2000 - 1994

White Nylon Qty/25



## CRX20911

MERCEDES-BENZ MOULDING CLIP

001-988-46-81

001-988-49-81

Front & Rear Door Moulding Clip

Width: 18.5mm

Length: 25mm

Overall Height: 21.5mm

Mercedes-Benz 1995 -1987

White Nylon Qty/25



## CRX20913

MERCEDES-BENZ MOULDING CLIP

006-988-89-78

124-988-04-78

Moulding Clip

Width: 11mm

Length: 45mm

Overall Height: 16mm

Mercedes-Benz 1999 - 92

White Nylon

Qty/25



## CRX20914

MERCEDES-BENZ MOULDING CLIP

001-988-50-81

Moulding Clip

Width: 22.5mm

Length: 23mm

Mercedes-Benz

White Nylon

Qty/25



# Mercedes Benz Clips

## CRX20916

*MERCEDES-BENZ MOULDING CLIP*

124-988-04-78

Moulding Clip

Width: 19mm

Length: 20mm

Overall Height: 20mm

Mercedes-Benz 1990 - 85

White Nylon Qty/25



## CRX20924

*MERCEDES-BENZ MOULDING CLIP*

007-988-71-78

Front & Rear Door Moulding Clip

Width: 32.5mm

Length: 48mm

Overall Height: 15mm

Mercedes-Benz 2009 - 1994

White Nylon Qty/25



## CRX20918

*MERCEDES-BENZ MOULDING CLIP*

001-988-80-81

Front Fender & Quarter Panel Moulding Clip

Width: 23mm

Length: 32.5mm

Stem Length: 16mm

With White Rubber Boot

Mercedes-Benz 2006 -1994

White Nylon Qty/15



## CRX20922

*MERCEDES-BENZ MOULDING CLIP*

001-988-63-81

Quarter Panel Moulding Clip

Width: 19mm

Length: 32mm

Overall Height: 25.5mm

Mercedes-Benz 1995 - 1987

White Nylon Qty/25



## CRX25743

*MERCEDES-BENZ DOOR PANEL*

*RETAINING CLIP*

463-933-02-78

Door panel Retaining Clip

Top Head Diameter: 11.5

Bottom Head Diameter:

18mm

Stem Diameter: 9mm

Stem Length: 14mm

Black Nylon Qty/25



## CRX29755

*MERCEDES-BENZ PUSH TYPE RETAINER*

009902992 0009906092 0019901692

1104882 1149900192 1268642 1719245

9133417

001-988-63-81

Black nylon Push-Type Retainer

Head Diameter: 16mm

Stem Length: 11mm

Fits Into 8mm Hole

Mercedes-Benz, Opel & Volvo

1985 - On Qty/15





# Miscellaneous

## CRX18109

### GREASE FITTING CAP

Polyethylene caps that snap over fittings to seal out dirt and moisture. Integral ring keeps cap in place during servicing. Black 50/pkg



## CRX10335

### Jack Nut

M6-32 .015" - .187" Jack Nut  
Zinc  
Qty/25



## CRX16745

### 3/16" VIBRATION PROOF LOCK WASHER

For 3/16" or 5mm Bolt Outer Diameter: 11/32"  
Zinc/Yellow  
Qty/50



## CRX18623

### 3/8" SPRING ACTION HOSE CLAMP

Hose Outer Diameter: 3/8" Width: 5/16"  
Hose Clamps  
Phosphate/black Qty/100  
Qty/100



## CRX18621

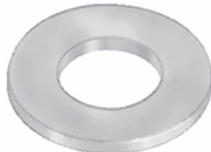
### 1/2" SPRING ACTION HOSE CLAMP

Hose Outer Diameter: 1/2"  
Width: 5/16"  
Hose Clamps  
Red Phosphate  
Qty/100

## CRX13975

### NYLON FLAT WASHER

Bolt Size: 1/16"  
Inside Diameter .140"  
Outside Diameter .312"  
Thickness .062" Qty/100



## CRX14112

### 1-1/4 FOOTMAN LOOP

For 1-1/4" Strap 1-1/4" Hole Size 2-1/4"  
Hole Center to Hole Center 2-3/4" Overall length Qty/25



# Jack Nut Installation Rods

## CRX16229

6-32 Thread  
Use with CRX16224  
Qty/1

## CRX16331

4mm Thread  
Use with CRX16224  
Qty/1

## CRX16332

5mm Thread  
Use with CRX16224  
Qty/1





# Mitsubishi Clips

## CRX29309

*MITSUBISHI PUSH TYPE RETAINER  
MR288150*

Push Type Retainer  
Head Diameter: 15mm  
Stem Length: 11mm  
Fits Hole: 6mm  
Mitsubishi MR288150  
Endeavor, Galant,  
Lancer, Mirage,  
Montero & Outlander  
1997 - On  
Black Nylon Qty/10



## CRX29310

*MITSUBISHI WINDSHIELD MOULDING  
CLIP*

MB608137  
Windshield Moulding Clip Diamante  
1995-91 Natural Nylon Qty/15



## CRX29311

*MITSUBISHI WINDSHIELD MOULDING  
CLIP*

MR154128  
Windshield Moulding  
Clip Diamante 1997-on  
Natural Nylon Qty/15



## CRX29308

*MITSUBISHI ROCKER PANEL RETAINER  
MB846992*

Top Hd Diameter:  
12mm Fits Into 7mm  
Hole  
Mitsubishi 2001 - On  
Panel Retainers  
Nylon  
Qty/10



## CRX29314

*MITSUBISHI RADIATOR GRILLE CLIP  
MU480001*

Natural Nylon M3.5 (#6)  
Screw Size Head Size: 10mm  
x 10mm Stem Length: 7mm  
Fits Into 6mm x 6mm Hole  
Chrysler Avenger, Colt,  
Jeep Eagle Talon, Laser  
& Sebring and Mitsubishi Eclipse 2000 -  
1984 Qty/50



## CRX29313

*MITSUBISHI RADIATOR GRILLE CLIP  
MR221507*

Radiator Grille Clip  
Width: 14mm  
Length: 24mm  
Diamante, Endeavor, & Galant  
Gray Nylon  
Qty/25



## CRX29315

*MITSUBISHI REAR SIDE TRUNK SCREW  
GROMMET  
MU48003)*

Rear Side & Trunk  
Screw Grommet  
Screw Size: #8  
Mitsubishi MU480034  
Eclipse 1994-On  
Natural Nylon  
Qty/15



# Nissan Clips

## CRX29665

*NISSAN BUMPER SCREW GROMMET*  
01281-01321

Natural Nylon Bumper Screw Grommet M5.5 (#12) Screw Size Overall Length: 22mm Infiniti I30 I35 & Q45 and Nissan Altima Qty/25



## CRX25716

*GM & NISSAN PUSH TYPE*  
*RETAINER*

622A2-9E000A

Bumper Cover Push-Type Retainer

Head Diameter: 25mm

Stem Length: 29mm Fits Into 7mm Hole Nissan Altima 1997 - On Qty/15



## CRX29866

*NISSAN BUMPER AND TRIM*  
*RETAINER*

01553-01A50

Black Nylon Bumper and Trim Retainer Head Dia: 12mm, Stem Dia: 6mm, Stem Length: 15mm, Infiniti FX35, G35, G37, M35, M45 & Q45 and Nissan 350Z &



## CRX25711

*NISSAN CLIP BLACK NYLON*  
65722-EA000

Hood Prop Rod Clip

Rod Size: 8mm

Nissan 2005 - On

Qty/10



## CRX25713

*NISSAN NYLON DOOR TRIM PANEL*  
*RETAINER*

01553-3500

White Nylon Nissan Trucks Door Qty/50



## CRX29936

*NISSAN PILLAR MOULDING*  
*GROMMET*

76848-71S00

Pillar Moulding Grommet With Sealer

Head Size: 15.4mm x 19mm

Stem Length: 15mm

Infiniti G37 & Q45 & Nissan 370Z & Quest 2012 - 02

Yellow Nylon Qty/15



## CRX15007

*NISSAN SCREW GROMMET WITH*  
*SEALER*

26557-2U001

Brown Nylon

Screw Grommet With Sealer

M6.3-1.81 (#14) Screw Size

Head Size: 15mm x 19mm

Stem Length: 16mm 2014-02

Qty/15



## CRX21430

*NISSAN OIL PLUG GASKET*  
11026-01M02

Oil Drain Plug Gasket

Copper Crushable

I.D.: 12mm, O.D.: 17.7mm

Thickness: 3mm

Used with M12-1.75 Oil Drain Plugs

On Mercury Villager and

Nissan 350Z & Sentra 2009 - 2000

Qty/10



# Nissan Clips

## CRX29919

*NISSAN MOULDING GROMMET*

01553-02913

Moulding Grommet With Sealer

Head Diameter: 14mm

Stem Length: 8mm

Fits Into 8mm Hole

Infiniti QX4 & QX56

and Nissan

Frontier, Pathfinder &

Titan 2012-1996



## CRX29830

*NISSAN PUSH TYPE RETAINER*

01553-06071

Rear Duct Finishing Panel Push

Type Retainer Black Nylon

Head Diameter: 15mm

Stem Length: 14mm

Fits Into 5mm Hole

Nissan Cube S, SL,

Krom & Leaf 2012 - On

Qty/25



## CRX29783

*NISSAN PUSH TYPE RETAINER*

01553-08231

Front & Rear Bumper and Grille

Push-Type Retainer

Head Diameter: 20mm

Stem Length: 15mm

Fits Into 8mm Hole

Infiniti FX35, FX45 &

Q45 and Nissan Murano,

240 SX & 350Z 2011 - 1995

Black Nylon

Qty/25



## CRX29832

*NISSAN PUSH TYPE RETAINER*

01553-0038U

Bumper Push-Type Retainer

Head Diameter: 18mm

Stem Length: 12mm

Fits Into 8mm Hole

Nissan Frontier,

Pathfinder

& Xterra 2005 - On

Gray Nylon

Qty/10



## CRX25712

*NISSAN TRIM PANEL  
RETAINER*

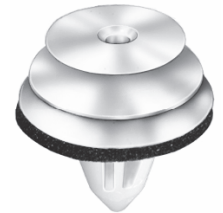
80999-VE000

White Nylon Trim Panel

Retainer with Sealer.

Overall length: 19.5mm

Infiniti and Nissan 1993-on Qty/25



## CRX29480

*DOOR TRIM PANEL  
RETAINER WITH  
SEALER*

84953-AU100

Top Head Dia: 13mm

Middle Head Dia: 16mm

Bottom Head Dia: 18mm

Stem Dia: 9mm Stem

Length: 14mm Infiniti FX35, X45, G35 &

G37 2008 - 03

Black Nylon



## CRX29834

*NISSAN PUSH TYPE RETAINER*

84995-3J101

Push-Type Retainer

Head Diameter: 20mm

Stem Length: 8mm

Fits Into 8mm Hole

Nissan Sentra 2007 - On

Black Nylon

Qty/15



# Nissan Clips

---

## CRX20469

*NISSAN PUSH TYPE RETAINER*  
*01553-2DR9A*

Top Head Diameter: 16mm x 19mm Bottom  
Head Diameter: 20mm Stem Length: 12mm Fits  
Into 8mm Hole Black Nylon  
Infiniti G20, JX35, Q45 & QX60 and Nissan  
Frontier, Maxima, NV, Pathfinder, Sentra, Versa  
& Xterra 2002 - On Qty/25



## CRX29483

*NISSAN BUMPER GROM-  
MET*

*63846-5V000*

White Nylon M4.8 (#10)  
Screw Size

Head Diameter: 20mm

Stem Length: 16mm

Overall Length: 22mm

Infiniti FX35, FX45, JX35, M35,

M36, M37, M56 & QX56 and Nissan Altima,  
Juke, Maxima, Murano, Quest & Sentra 2003 -  
On Qty/25



---

## CRX29481

*NISSAN MOULDING CLIP*  
*Nissan: 26398-ED000)*

Top Head Size: 13mm x 13mm  
Bottom Head Diameter: 19mm  
Stem Length: 10mm  
Nissan Armada, Juke,  
Pathfinder, Sentra & Versa  
2006 - On





# Subaru Clips

## CRX29478

*SUBARU HEADLINER AND TRIM  
SPACER RETAINER*

95022-AC040ML

Black Nylon

Headliner and Trim Spacer Retainer

Head Diameter: 20mm

Stem Diameter: 6mm

Stem Length: 6mm

Subaru Forester, Impreza,  
Legacy &

Outback 2013 - 1998

Qty/25



## CRX29845

*SUBARU FRONT FENDER BUMPER  
RETAINER*

46064-AE000

Black Nylon

Front Fender Bumper  
& Quarter Panel

Push-Type Retainer

Head Diameter: 15mm

Stem Length: 8mm

Fits Into 7mm Hole

Baja, Forester, Impreza,  
Legacy & Outback

2003 - On Qty/10



## CRX29846

*SUBARU MOULDING RETAINER WITH  
SEALER*

90913-0007

Pillar & Door Moulding Trim & Rear Light  
Retainer With Sealer

Top Head Size: 11mm x 15mm

Bottom Head Diameter: 18mm

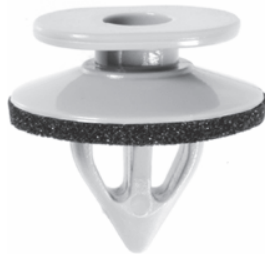
Stem Diameter: 9.7mm

Stem Length: 12mm

Subaru B9 Tribeca, Forester,  
Impreza, Legacy & Outback

2012 - 05

Gray Nylon Qty/25



## CRX20926

*SUBARU PUSH TYPE RETAINER*

90914-0063

Cowl Vent Push-Type Retainer

Head Diameter: 20mm

Stem Length: 12mm

Fits Into 7mm Hole

Subaru Legacy & Outback 2010 - On

Black Nylon Qty/10



## CRX20928

*SUBARU PUSH TYPE RETAINER*

90914-0007

Bumper, Engine Cover, Fender Grille

Push-Type Retainer

Head Diameter: 21mm

Stem Length: 15mm

Fits Into 10mm Hole

Subaru Baja, Forester, Impreza,  
Legacy, Outback & Tribeca 2011

- 2000

Black Nylon Qty/15



## CRX29879

*SUBARU COWL PANEL VENT CAP*

91486-KJ010

Black Nylon Cowl Panel Vent Cap Top  
head size: 16mm x 18mm, Bottom head  
dia: 14mm, Stem length: 12mm, Subaru  
Forester, Impreza, Legacy, Outback and  
WRX 2008-on Qty/15





# Subaru Clips

## CRX20930

*SUBARU PUSH TYPE RETAINER*

90914-0055

Rocker Moulding Push-Type Retainer  
With Sealer

Head Diameter:

25mm Shoulder

Length: 3mm

Shoulder Diameter:

16.5mm Stem

Length: 12mm

Fits Into 11mm Hole

Subaru B9 Tribeca,  
Forester, Impreza, Legacy & Outback  
2006 - On Black Nylon Qty/5



## CRX20932

*SUBARU PUSH TYPE RETAINER*

90914-0051

Front Bumper & Quarter Panel Push-  
Type Retainer

Head Diameter: 20mm

Stem Length: 9mm

Fits Into 7mm Hole

Subaru Impreza, Legacy, Outback &  
Tribeca 2011 - 2005

Black Nylon Qty/15



## CRX21575

*SUBARU PUSH TYPE RETAINER*

90913-0003

Upper Grille Push-Type Retainer

Head Diameter: 9mm

Stem Length: 7mm

Fits Into 4mm Hole

Subaru Baja, Legacy & Outback  
2006 - 2000

Black Nylon Qty/25



## CRX29319

*SUBARU PUSH TYPE RETAINER*

90914-0052

Push-Type Retainer

Head Diameter: 20mm

Stem Length: 11mm

Fits Into 7mm Hole

Subaru B9 Tribeca, Impreza, Legacy &  
Outback 2005 - On

Black Nylon Qty/15



## CRX29842

*SUBARU PUSH TYPE RETAINER*

90913-0051

Fender Liner, Duct & Lower  
Moulding Push-Type Retainer

Head Diameter: 20mm

Stem Length: 11mm

Fits Into 7mm Hole

Subaru B9 Tribeca, Forester,  
Impreza, Legacy & Outback  
2005 - On

Black Nylon Qty/15



# Subaru Clips

## CRX29843

*SUBARU PUSH TYPE RETAINER*

90914-0012

Rear Light Reflector & Roof  
Spoiler Push-Type Retainer

Head Diameter: 16mm

Stem Diameter: 16mm

Stem Length: 11mm

Fits Into 6mm Hole

Subaru B9 Tribeca, Im-  
preza Legacy & Outback 2012 - 05

Black Nylon Qty/25



## CRX29844

*SUBARU PUSH TYPE RETAINER*

90913-0067

Engine Cover and Fender Liner  
Push-Type Retainer

Head Diameter: 18mm

Stem Length: 10mm

Fits Into 8mm Hole

Subaru B9, Forester, Legacy, Outback, &  
Tribeca 2005 - On

Black Nylon

Qty/15



## CRX29995

*SUBARU PUSH TYPE RETAINER*

90913-0059

Front Bumper & Fender  
Push-Type Retainer

Head Diameter: 20mm

Stem Length: 15mm

Fits Into 10mm Hole

Subaru Forester, Impreza  
& Outback 2006 - 02

Black Nylon Qty/25



## CRX29863

*SUBARU RETAINER WITH SEALER*

90913-0213

Door Trim Panel Retainer With Sealer

Top Head Diameter: 13mm

Middle Head Diameter: 16mm

Bottom Head Diameter: 15mm

Stem Diameter: 9.5mm

Stem Length: 14mm

Subaru Legacy &  
Outback 2010 - On

White Nylon Qty/10



## CRX20934

*SUBARU HOOD INSULATION  
RETAINER*

90913-0074

Black Nylon

Hood Insulation Retainer

Head Diameter: 30mm

Stem Diameter: 7.7mm

Stem Length: 13mm

Subaru Baja, Forester, Impreza,  
Legacy, Outback & Tribeca

2011 - 1998

UNIT PACKAGE: 15



# Subaru Clips

## CRX21582

*SUBARU GRILLE CLIP*

91059-FC090

Grille Clip Top Head Size:  
15.5mm x 11mm

Bottom Head Size: 19.5mm  
x 14mm

Stem Length: 11mm

Subaru Forester & Legacy  
2008 - 1991

Black Nylon

Qty/25



## CRX21583

*SUBARU GRILLE CLIP*

91017-FA080

Grille Clip Overall Height: 27mm

Subaru Forester, Impreza & SVX 2008 -  
1993 Gray Nylon

Qty/25



## CRX21576

*SUBARU SCREW GROMMET WITH  
SEALER*

91084AA01A

Screw Grommet  
With Sealer

Screw Size: M5.5 (#12)

Head Diameter: 20mm

Stem Length: 18mm

Subaru Forester, Impreza,  
Legacy, Outback &

Tribeca

1995 - On

Qty/15



## CRX21577

*SUBARU MOULDING CLIP*

57160FC010

White Nylon Upper Front Bumper

Extension Moulding Clip. Top Head Size:

9mm x 11mm Bottom Head Size 14mm x

17mm Stem Length: 11mm Subaru

Forester 2005-1998 Qty/15



## CRX29847

*SUBARU NYLON TYPE NUT*

91086AA000

Black Nylon Splash Guard Nylon Nut

With Metal Insert Nut

Thread: M5-.80

(Internal Steel Nut)

Panel Range: Up To 3mm

Center of Hole to Edge: 10mm

Subaru

2008 - On Qty/10



# Toyota Clips

## CRX29991

TOYOTA ROCKER MOULDING PANEL  
RETAINER

75867-33030

Charcoal Nylon Rocker Moulding Panel

Retainer Top Head Dia: 13mm

Bottom Head Dia: 18mm

Stem Length: 13mm

Toyota Avalon, Camry, Prius,  
Scion, Sienna, Solara and

Venza 2000-on Qty/25



## CRX 25704

TOYOTA & LEXUS SCREW GROMMET  
52535-30150

Front & Rear Bumper Screw Grommet

M5.5 (#12) Screw Size

Head Size: 17.5mm x 30mm

Stem Length: 10mm

Lexus ES300, 330, 350, LS430 & RX300  
and Toyota Avalon, Sequoia & Tundra  
2011 - 1999 White Nylon

Qty/25



## CRX29525

TOYOTA APRON U NUT

53879-1702

Black Nylon Bumper &

Fender Apron U Nut

M4.8 (#10) Screw Size

Center Of Hole To Edge:

10mm Panel Range: Up To

2mm Toyota Celica and Lexus

2000 and on

Qty/10



## CRX20735

TOYOTA COWL TRIM RETAINER

90467-09212

Top Head Size: 13mm x 18mm, Middle

Head Dia: 16mm, Bottom Head Dia:

18mm, Stem Dia: 10.7mm, Stem Length:

12mm Toyota Camry 2010-on Qty/25



## CRX29300

TOYOTA FLOOR SCREW GROMMET

90189-06211

Black Nylon Pillar, Rocker and Floor Screw

Grommet

M5.5 (#12) Screw Size Head Diameter: 17mm

Stem Length: 10mm Fits Into 9mm Square Hole

Camry 2010 - On 25/pkg



## CRX21425

TOYOTA GRILLE CLIP

76882-0M060

Black Nylon Grille Clip Overall

Height: 25mm (1") Frontier, Krom

and SL 2006-on Qty/15



# Toyota Clips

## CRX21416

TOYOTA MOULDING CLIP

75867-AC020

Moulding Clip With Sealer

Head Diameter: 18mm

Stem Length: 13mm

Fits Into 8mm Hole

Avalon 2005 - On

White Nylon Qty/10



## CRX25722

TOYOTA MOULDING CLIP

90467-08101

BLACK NYLON

Hood to Cowl Top Seal Retaining Clip

Head Size: 7mm x 13mm

Stem Diameter: 7.5mm

Stem Length: 13mm

Lexus ES 300 and Toyota Camry,  
Sequoia, Solara & Tundra 2006 - 1997

Black Nylon Qty/25



## CRX25723

TOYOTA MOULDING CLIP

67868-30030

Black Nylon

Door & Roof Rail Retainer

Head Diameter: 9mm

Stem Diameter: 5.3mm

Stem Length: 8mm

Lexus HS 250H, IS 250, IS 350, RX 350  
& 450H 2012 - 06

Toyota Camry, Corolla, Corona & Land  
Cruiser 1999 - 74

Black Nylon Qty/25



## CRX29302

TOYOTA MOULDING CLIP

90467-06128

Black Nylon Weatherstrip Retaining Clip

Head Diameter: 12mm

Stem Diameter: 6.5mm

Stem Length: 11mm

Toyota Camry & RAV4 1992  
- On

Black Nylon Qty/25



## CRX21413

TOYOTA MOULDING CLIP WITH  
SEALER

81498-21010

Rear Light Housing Guide With Sealer

Top Head Diameter: 13mm

Bottom Head Diameter: 20mm

Stem Length: 10mm

Toyota Prius 2012 - On

Yellow Nylon Qty/10



## CRX21415

TOYOTA MOULDING RETAINER

76853-10010

Front & Rear Bumper Clip

Head Size: 13mm x 26mm

Stem Length: 25mm

Toyota Matrix 2008 - 03

White Nylon Qty/25





# Toyota Clips

## CRX25724

TOYOTA PUSH TYPE RETAINER

75867-06030

Rocker Panel Push-Type  
Retainer

Head Diameter: 20mm

Stem Length: 16mm

Fits Into 8mm Hole

Toyota & Lexus 2007 - On

Black Nylon Qty/25



## CRX29306

TOYOTA PUSH TYPE RETAINER

90467-07214

Radiator Splash Shield Push-Type  
Retainer

Head Diameter: 20mm

Stem Length: 9mm

Fits Into 7mm Hole

Toyota Camry 2007 - On

Black Nylon Qty/25



## CRX29993

TOYOTA PUSH TYPE RETAINER

90467-09185

Black Nylon Front Spoiler & Grille  
Push-Type Retainer

Head Diameter: 18mm

Stem Length: 10mm

Fits Into 9mm Hole

Lexus HS 250H and Toyota  
Celica, Sequoia, Sienna &  
4-Runner

2012 - 1994 Qty/25



## CRX20737

TOYOTA RETAINER WITH SEALER

75395-0T010

Moulding Clip With Sealer

Top Head Size: 5mm x 10mm

Bottom Head Diameter: 18mm

Stem Diameter: 10mm

Stem Length: 13mm

Toyota Corolla & Venza 2011 - 08

White Nylon Qty/25



## CRX29304

TOYOTA ROCKER MOULDING SCREW  
GROMMET

90189-06177

Black Nylon

Rocker Moulding

Screw Grommet

M5.5. (#12) Screw Size

Head Diameter: 20mm

Stem Length: 22mm

Fits Into 9mm x 9mm Hole

Camry 2010 -On Qty/15



## CRX25721

TOYOTA SCREW GROMMET

90189-06145

Fender Lining Screw Grommet

M5.5 (#12) Screw Size

Head Diameter: 16mm

Stem Length: 16mm

Fits Into 9mm x 9mm Hole

Toyota Prius, Sequoia &

T-100 and Lexus CT 200H 1993 - On

Black Nylon Qty/15



# Toyota Clips

## CRX29992

*TOYOTA SCREW GROMMET  
W/SEALER*

*90189-04102*

Screw Grommet With Sealer

M3.5 (#6) Screw Size

Head Size: 10mm x 10mm

Stem Length: 15mm

Fits Into 7mm Square Hole

Lexus IS 250, IS 350 & IS F and  
Toyota Highlander 2006 - On

White Nylon Qty/25



## CRX29996

*TOYOTA WEATHERSTRIP RETAINER  
67869-20030*

Weatherstrip Retainer

Head Diameter: 10mm

Stem Diameter: 6mm

Stem Length: 10mm

Lexus IS 300 & SC 430 and Toyota  
Camry, Celica, Corolla, Highlander, Ma-  
trix, MR-2, Prius, RAV-4, Scion, Solara &  
Supra 2012 - 1990

Black Nylon Qty/25



## CRX21423

*LEXUS & TOYOTA MOULDING CLIP  
90467-12080*

Pink Nylon Door Trim, Instrument Panel,  
Rear Deck Trim & Roof Garnish Trim

Moulding Clip

Overall Height: 21mm

Lexus ES 350, GX 460, RX 330 & RX  
450H and Toyota Avalon, Camry, Corolla,  
Echo, FJ Cruiser, Highlander, Matrix,  
Prius, RAV 4, Sequoia, Sienna, Tacoma,  
Tundra

Qty/25



## CRX23674

*LEXUS & TOYOTA WEATHERSTRIP  
CLIP*

*90467-04034*

Weatherstrip Retainer

Top Head Size: 5mm x 15mm

Bottom Head Diameter: 9mm

Stem Diameter: 6.5mm

Stem Length: 4mm

Lexus CT 200H, HS 250H, IS, F, IS 250,  
IS 350, LS 460, LS 600H, RX 350, RX  
400H & RX 450H and Toyota Avalon,  
Corolla, Highlander, Matrix, Prius Qty/25



# Toyota Clips

## CRX25741

*TOYOTA PILLAR GARNISH MOULDING CLIP*

90467-09204

Front Body Pillar Garnish Moulding Clip

Overall Height: 14mm

Lexus GS 300, GS 400, GS 460, GX 470, RX 330, RX 350, RX 400 & RX 450 and Toyota Camry, Highlander, Prius & Sienna 2012 - 1998 White Nylon Qty/25



## CRX29996

*TOYOTA WEATHERSTRIP RETAINER*

67869-20030

Weatherstrip Retainer

Head Diameter: 10mm

Stem Diameter: 6mm

Stem Length: 10mm

Lexus IS 300 & SC 430 and Toyota Camry, Celica, Corolla, Highlander, Matrix, MR-2, Prius, RAV-4, Scion, Solara & Supra 2012 - 1990

Black Nylon Qty/25



## CRX21423

*LEXUS & TOYOTA MOULDING CLIP*

90467-12080

Pink Nylon Door Trim, Instrument Panel,

Rear Deck Trim & Roof Garnish Trim

Moulding Clip

Overall Height: 21mm

Lexus ES 350, GX 460, RX 330 & RX 450H and Toyota Avalon, Camry, Corolla, Echo, FJ Cruiser, Highlander, Matrix, Prius, RAV 4, Sequoia, Sienna, Tacoma, Tundra

Qty/25



## CRX23674

*LEXUS & TOYOTA WEATHERSTRIP CLIP*

90467-04034

Weatherstrip Retainer

Top Head Size: 5mm x 15mm

Bottom Head Diameter: 9mm

Stem Diameter: 6.5mm

Stem Length: 4mm

Lexus CT 200H, HS 250H, IS, F, IS 250, IS 350, LS 460, LS 600H, RX 350, RX 400H & RX 450H and Toyota Avalon, Corolla, Highlander, Matrix, Prius Qty/25



# Toyota Clips

## CRX25731

TOYOTA MOULDING CLIP WITH SEALER

90467-08195

Moulding Clip With Sealer

Head Size: 15mm x 22mm

Stem Length: 13mm

Overall Length: 21mm

Lexus GX470 2009 - 03 Toyota Land

Cruiser 2007 - 1998

Toyota: 90467-08195

White Nylon

Qty/25



## CRX25732

TOYOTA MOULDING CLIP WITH SEALER

90467-08196

Moulding Clip With Sealer

Head Size: 16mm x 22mm

Stem Length: 19mm

Overall Length: 27mm

Toyota: 90467-08196

Lexus GX470 2009-03

Toyota Land Cruiser 2007

- 1998 Yellow Nylon Qty/25



## CRX25733

TOYOTA BUMPER CLIP

53879-30040

Width: 32mm

Length: 39mm

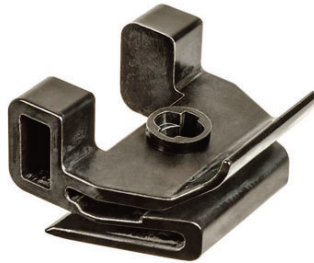
Use With CRX29119

Toyota Camry 2012 -

On Black Nylon

White Nylon

Qty/25



## CRX25735

TOYOTA MOULDING CLIP WITH SEALER

75867-30130

Moulding Clip With

Sealer Top Head Dia:

13mm Bottom Head

Diameter: 18mm

Stem Diameter: 8.5mm x

8.5mm Stem Length:

13mm White Nylon

Qty/25



## CRX25736

TOYOTA SPECIALTY RIVET

90269-06054

Specialty Rivet 5/32" (4mm)

Diameter Grip: 3/64" - 3/8"

(1mm-9.5mm) Flange Diameter:

15/32" (12mm) Aluminum Rivet

(Black) Steel Mandrel (Black)

European Toyota and Universal

Qty/25



## CRX25740

TOYOTA SPOILER MOULDING CLIP

75392-35220

Front & Rear Spoiler

Moulding Clip

Head Size: 10mm x 20mm

Stem Length: 24mm

Overall Length: 27mm

Toyota: 75392-35220

Lexus HS250 & RX350 and Toyota

Camry, Corolla, FJ Cruiser & Highlander

2010 - On White Nylon Qty/25



# Toyota Clips

## CRX17651

TOYOTA SPECIALTY RIVET

75547-51021

Windshield Rivet With Plastic Cap

3.2mm (1/8") Diameter

Nylon Shoulder Diameter: 6.3mm (1/4")

Grip: .8mm-1.5mm (1/32" - 1/16")

Nylon Flange Diameter: 10.3mm (13/32")

Aluminum Rivet, Steel Mandrel

Lexus IS 250, IS 350 & IS F 2006 - On  
qty/15



## CRX25738

TOYOTA SPECIALTY RIVET

90269-A0005

1/4" (6.3mm) Dia.

Grip: 1/16" - 3/16"

(1.6mm - 4.8mm)

Flange Dia.: 1/2" (13mm)

Black Aluminum Rivet

Steel Mandrel

Fuel Door & General Purpose

Toyota 2007 - On Qty/10



## CRX25739

TOYOTA FENDER LINER GROMMET

90189-06236

Fender Liner Grommet

M5.5 (#12) Screw Size

Head Diameter: 20mm

Stem Length: 17mm

Fits Into 9mm x 9mm Hole

Toyota Echo, RAV4, Tacoma & Scion

2005 - On Black Nylon Qty/25



## CRX29313

RADIATOR GRILLE CLIP

90467-13075

Radiator Grille Clip

Width: 14mm

Length: 24mm

4 Runner, Highlander, & Land

Cruiser

Gray Nylon

Qty/25



## CRX29321

TOYOTA Moulding Clip

67771-58010

White Nylon

Door & Garnish

Moulding Clip

Overall Height: 12.4mm

(1/2)

Tundra

2007-On Qty/25





# VW & Audi Clips

## CRX29706

*VW MOULDING CLIP*

3A0-853-575

Door Fender & Quarter Panel Moulding Clip

Width: 35mm

Length: 38mm

Stem Length: 14mm

With Blue Rubber Boot Volkswagen 1997 - 90

White & Orange Nylon

Qty/15



## CRX29708

*AUDI VW REAR DOOR MOULDING CLIP*

4A0-853-825-C

Rear Door Moulding Clip

Width: 26mm

Length: 34.5mm

Stem Length: 6mm

Audi 100, A6, S4, S6  
& Quattro 1998 - 92

White Nylon

Qty/25



## CRX29712

*VW PUSH TYPE RETAINER*

1H0-867-199-A

Push - Type Retainer

Head Diameter: 24mm

Stem Length: 13mm

Fits Into 9mm Square  
Hole

VW Passat 1999 - 90

Black Nylon

Qty/25



## CRX29643

*VW SCREW GROMMET*

165-827-592

Screw Grommet

M4.2 (#8) Screw Size

Head Diameter: 11mm

Stem Length: 13mm

VW Cabrio, EuroVan, Golf,  
Jetta 2003 - 1992

Natural Nylon

Qty/25



## CRX29930

*AUDI VW HEADLIGHT ADJUSTING NUT*

191-941-142

Headlight Adjusting Nut

Head Size: 14mm x  
18.5mm

Overall Length: 15mm

Fits Into 10mm Hole

Audi 100 and VW Golf  
1994-86

White Nylon Qty/25



## CRX25708

*AUDI VW RETAINER WITH SEAL*

7L6-868-243

Door Trim Panel Retainer With Sealer

Head Diameter: 22.5mm

Stem Diameter: 9mm

Stem Length: 12mm

Audi A5, A6, A7, S5, S6 &  
S7 and VW Beetle, Cabrio,  
Golf, GTI, Jetta, Passat &  
Touareg 2004 - On

Black Nylon Qty/25



# VW & Audi Clips

## CRX29878

AUDI VW HOOD PROP ROD CLIP

6N0-823-397-AC

Black Nylon

8mm Rod Size

Head Diameter: 15mm

Fits Into 7mm Square Hole

VW & Audi

Qty/25



## CRX20579

AUDI MOULDING CLIP

Front Door, Fender & Quarter Panel

Moulding Clip

Width: 20mm

Length: 41.5mm

Audi 1998 - 88

Natural Nylon Qty/25



## CRX20915

VW MOULDING CLIP

3A0-853-575-A

Width: 16mm

Length: 17mm

Stem Length: 13mm

Volkswagen Passat 1997

- 95 White Nylon With

Blue Rubber Grommet

Qty/25



## CRX29114

VW MOULDING CLIP

3B0-853-575

Moulding Clip

Width: 17.5mm

Length: 21mm

Stem Length: 12mm

With Blue Rubber

Grommet

Volkswagen Passat

2005 - 1998

White Nylon Qty/25



## CRX29718

AUDI FRONT AND REAR DOOR

FENDER AND PANEL MOULDING CLIP

4A0-853-825

Width: 22mm

Length: 35mm

Overall Height: 16mm

Audi 1998 - 92

White Nylon Qty/25



## CRX29725

AUDI FRONT AND REAR DOOR

MOULDING CLIP

4A0-853-825-A

Front & Rear Door Moulding Clip

Width: 22mm

Length: 35mm

Audi 1998 - 92

White Nylon

Qty/25



# VW & Audi Clips

## CRX29730

AUDI VW DOOR TRIM AND SCUFF  
PLATE MOULDING CLIP

191-853-577

Head Size: 12mm x 15mm

Stem Diameter: 10mm

Stem Length: 19mm

Audi A1 & A2 and VW

Golf & Jetta

VW: 191-853-577

White Nylon Qty/25



## CRX29732

AUDI VW WHITE NYLON WITH BLUE  
RUBBER GROMMET

1H0-853-585-A

Quarter Panel Moulding Clip

Width: 23mm

Length: 40mm

Stem Length: 11mm

Audi & VW Cabrio, Golf  
& Jetta 2002 - 1993

Qty/15



## CRX29734

AUDI VW BLUE RUBBER GROMMET  
1H0-853-585-B

White Nylon Door Moulding Clip

Width: 34mm

Length: 38.5mm

Stem Length: 18mm

Audi & VW Cabrio

2002 - 1999

Qty/15



## CRX29735

VW MOULDING CLIP

191-853-733-A

Width: 8mm

Length: 31mm

VW Passat 1997 - 1990

White Nylon

Qty/25



## CRX29731

VW MOULDING CLIP

3B0-853-575

White Nylon Width: 17.5mm Length:

21mm Stem Length: 12mm With Blue

Rubber Grommet Volkswagen Passat

2005 - 1998 Qty/25



## CRX15009

AUDI VW RETAINER

Yellow Nylon

Top Head Diameter: 13mm

Bottom Head Diameter: 17.5mm

Stem Diameter: 10mm

Stem Length: 16mm

VW, Audi, SEAT, Skoda &

Ford Qty/25



# VW & Audi Clips

## CRX29736

AUDI VW DOOR MOULDING CLIP

1H0-853-585

White Nylon W/ Blue Rubber Grommet

Width: 34mm

Length: 38.5mm

Stem Length: 10mm

Audi & VW Cabrio, Golf &

Jetta 2002 -1993

Qty/15



## CRX29738

VW MOULDING CLIP

3B0-853-576

Width: 24.5mm; Length: 27mm

Stem Length: 12mm

Volkswagen Passat 2005 - 1998

White Nylon With Blue Rubber Grommet

Qty/15



## CRX29645

VW PUSH TYPE RETAINER

701-867-299

Front Bumper & Interior Trim

Width 3mm Allen Head Drive

Head Diameter: 18.5mm

Stem Length: 11mm

Fits Into 9mm Hole

VW Jetta & Passat

2011 - 1999

Gray Nylon

Qty/25



## CRX29740

VW AUDI DOOR MOULDING CLIP

191-853-577-A

Top Head Size: 11.6mm x 15mm

Bottom Head Dia: 11mm

Stem Dia.: 6mm

Stem Length: 14mm

VW & Audi 1985 - On

White Nylon Qty/25



## CRX29928

VW ROCKER PANEL MOULDING CLIP

7L0-839-069

Width: 10mm, Length: 28.5mm

Stem Length: 11mm

Fits Into 10mm Hole

VW Touareg 2010 - 05

VW: 7L0-839-069

White Nylon

Qty/25



## CRX29729

AUDI VW MOULDING CLIP GROMMET

1H0-853-586

I.D.: 7mm

Flange O.D.: 13mm

Overall Length: 12mm

Audi and VW Cabrio,

Golf, Jetta, Passat &

Touareg 2007 - 1990

Blue Nylon Qty/25



# VW & Audi Clips

## CRX29714

AUDI MOULDING NYLON FLANGE NUT

171-201-969

Stud Size: 5mm

Hex: 10mm

Flange Diameter: 18.5mm

Overall Height: 10.5mm

Audi A8, S8 & 90 2003 - 1993

Black Nylon Qty/25



## CRX29702

VW PUSH TYPE RETAINER

1H0-819-055-C01C

Top Head Diameter: 23mm

Bottom Head Diameter: 16mm

Stem Length: 15mm

Fits Into 8mm x 8mm Square Hole

VW 2002 - 1993

Black Nylon Qty/25



## CRX29710

AUDI VW PUSH TYPE RETAINER

N038-550-1

Bumper, Exterior Trim, Fender, Quarter Panel & Wheel Opening Push-Type Retainer

Head Diameter: 12mm

Stem Length: 11mm

Fits Into 8mm Hole

Audi and Volkswagen

EuroVan, Golf, Jetta & Passat 2003 - 1985

Dark Gray Nylon Qty/25



## CRX20581

VW RADIATOR SUPPORT AND

SPLASH SHIELD PUSH ON RETAINER

N90-796-501, N90-796-502

Stud Size: 5mm

O.D.: 30mm

VW 2006 - 1999

Dacromet Plated Qty/25



## CRX29999

AUDI VW SPLASH SHIELD AND WHEEL WELL PUSH ON RETAINER

N90-335-006

Stud Size: 5mm

O.D.: 30mm

VW & Audi

Dacromet Qty/25



## CRX29726

VW PUSH TYPE RETAINER

333-867-633-4FB

Front Lights & Windshield Washer

Push-Type Retainer

Head Diameter: 14mm

Stem Length: 10mm

Fits Into 8.5mm Hole

VW 1998 - 95

Black Nylon Qty/25





# VW & Audi Clips

## CRX29636

*AUDI VW GRILLE & DUCTS RETAINER*  
1H0-819-055-B01C

Instrument Panel, Cowl Vent, Defroster  
Head Diameter: 23mm  
Stem Diameter: 6.5mm  
Stem Length: 16mm  
Phillips Drive, Audi and  
Volkswagen Cabrio, Golf  
& Jetta 2002 - 1993  
Black Nylon  
Qty/25



## CRX29638

*AUDI VW WEATHERSTRIP RETAINER*  
*WITH CLEAR GROMMET*  
1H0-837-719

Head Size: 6mm x 15mm  
Stem Diameter: 7.5mm  
Stem Length: 17mm  
Audi A3 and VW Golf,  
Sharan, Transporter &  
Corsica  
Black Nylon  
Qty/25



## CRX29642

*AUDI VW TRIM PANEL RETAINER*  
171-807-249-A

Top Head Diameter: 12mm  
Bottom Head Diameter: 18mm  
Stem Diameter: 9.5mm  
Stem Length: 12mm  
VW Golf & Audi  
1978 - On  
Natural Nylon  
Qty/25



## CRX29647

*AUDI VW TRIM PANEL RETAINER WITH*  
*NYLON GROMMET*  
357-853-585-A

Top Head Diameter: 12mm  
Bottom Head Diameter: 18mm  
Stem Diameter: 10mm  
Stem Length: 12mm  
VW Golf & Passat and  
Audi B3  
White Nylon  
Qty/25



## CRX29722

*TRIM RETAINER*  
703-867-299

Side Panel & Interior  
Top Head Diameter: 13.5mm  
Bottom Head Diameter: 18mm  
Stem Diameter: 9mm  
Stem Length: 14mm  
VW 2003 - 1993  
Black Nylon  
Qty/25



## CRX29724

*RETAINER WITH GRAY GROMMET*  
357-853-575

Retainer With Gray Grommet  
Top Head Diameter: 12mm  
Bottom Head Diameter:  
18mm  
Stem Diameter: 10mm  
Stem Length: 16mm  
VW Golf, Jetta, Passat &  
Scirocco  
White Nylon  
Qty/25



# VW & Audi Clips

## CRX29727

VW ADJUSTABLE DOOR TRIM PANEL  
RETAINER

1H0-868-243-B

Head Diameter: 28.5mm

Stem Diameter: 9.5mm

Stem Length: 11mm

Overall Length: 31mm

VW Golf 2002 - 1993

Tan and White Nylon

Qty/25



## CRX29728

AUDI VW TRIM RETAINER

1H0-868-243

Large Head Diameter: 28mm

Small Head Diameter: 19mm

Overall Length: 31mm

Audi and Volkswagen Cabrio Golf & Jetta

1999 - 1993

Green & Black Nylon

Qty/25



## CRX29876

AUDI VW FRONT FENDER, BUMPER &  
ENGINE COVER RETAINER

4A0-805-121-A

Slotted Drive

Head Diameter: 25mm

Stem Length: 22mm

VW Passat & Audi 2011 -  
1992

Black Nylon

Qty/25



## CRX29877

VW AUDI RETAINER WITH BLACK  
NYLON GROMMET

357-853-585

Top Head Diameter: 12mm

Bottom Head Diameter: 18mm

Stem Diameter: 10mm

Stem Length: 20mm

VW Golf A2 & A3 and Audi

White Nylon

Qty/25



## CRX20850

AUDI VW HOOD PROP ROD CLIP

1H0-823-397

Rod Size: 8mm

Stem Length: 10mm

Fits Into 7mm Square

Hole

Natural Nylon

Qty/25



## CRX29716

AUDI VW SCREW GROMMET

867-809-966

811-807-557-C

Screw Size: M4.8 (#10)

Head Diameter: 12mm

Stem Length: 12.5mm

VW & Audi

Black Nylon

Qty/25



# VW & Audi Clips

## CRX29704

AUDI VW SCREW  
GROMMET

811-807-577-C

M4.8mm

(#10) Screw Size

Head Size: 7mm x

12.5mm

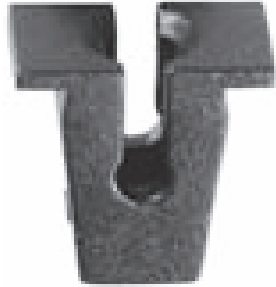
Stem Length: 11mm

Audi Quattro, A4, A6, A8, RS6, S4, TT &  
90 and Volkswagen Golf, Jetta & Passat

2010 - 1990

Black Nylon

Qty/25



## CRX29641

VW AUDI TRIM PANEL RETAINER

7L5-853-994

Top Head Diameter: 13mm Bottom

Head Diameter: 18mm Stem Dia: 9mm

Stem Length: 14mm

VW, Audi & Renault

Blue Nylon

Qty/25



## CRX29720

VW AUDI TRIM PANEL RETAINER

6K0-868-243-C

Top Head Diameter: 22mm

Bottom Head Diameter: 18mm

Stem Length: 12mm

Fits Into 8mm Hole

Audi and Volkswagen Touareg

2010 - 2004

Black Nylon

Qty/25



## CRX29733

VW AUDI MOULDING CLIP

6Q0-868-246--A

White Nylon Width: 25mm

Length: 40mm

Thickness: 8mm

Audi 2004 - On

VW Eos, Golf, GTI, Passat, R32 & Rabbit

2005 - On

Qty/25



## CRX29741

VW AUDI TRUSS HEAD TAPPING  
SCREW

N90775001

N90892001

M5-2.12 x 19mm

Head Diameter: 14mm

T25 Drive

Black Zinc Audi, Porsche & VW 2014 - 07

Qty/25



# Wire Tie Down Screw Mounts

## #10 SCREW NATURAL

Natural Color  
 Height .35"  
 Length .90"  
 Width .63"  
 Slot .350" w X .120" h

Attach with #10 Flat Head Screw  
 100/Pkg

### CRXTDW10

## 1/4" SCREW NATURAL

Natural Color  
 Height .38"  
 Length .90"  
 Width .63"  
 Slot .350" w X .125" h

Attach with 1/4 Flat Head Screw  
 100/Pkg

### CRXTDW14

## #4 SCREW NATURAL

Natural Color  
 Height .27"  
 Length .60"  
 Width .38"  
 Slot .200" w X .065" h

Attach with #4 Flat Head Screw  
 100/Pkg

### CRXTDW4

## #6 SCREW Black

Black Color  
 Height .27"  
 Length .60"  
 Width .38"  
 Slot .200" w X .065" h

Attach with #6 Flat Head Screw  
 100/Pkg

### CRXTDB6

## #8 SCREW Black

Black Color  
 Height .27"  
 Length .60"  
 Width .38"  
 Slot .200" w X .065" h

Attach with #8 Flat Head Screw  
 100/Pkg

### CRXTDB8



## Wall Mount Black Nylon Screw

Shaft Diam 25/64  
 Shaft Length 1.45"  
 1/2" Square Head  
 Slot Width .381 3/8"  
 100/pkg



### CRXTDWMB

# Fuse Amp

## CRX24682

White Fuse  
25 Amp Rating  
Qty/3



## CRX24684

Pink Fuse  
30 Amp Rating  
Qty/3



## CRX24686

Green Fuse  
40 Amp Rating  
Qty/3



## CRX24688

Red Fuse  
50 Amp Rating  
Qty/3



## CRX24700

Yellow Fuse  
60 Amp Rating  
Qty/3



## CRXTDWMB

For marine and exposed applications. Brass nickel plated terminal links and binding head terminal screws. Moisture repellent molded ABS base with protective insulator barrier strips. 20 Amp rating 4 Gang (circuits) Size: 3-1/4" x 1-5/16" x 5/8" Qty/1





# Index

Part #	Page #	Part #	Page #	Part #	Page #	Part #	Page #
CRX10335	61	CRX20737	48	CRX21427	19	CRX25723	47
CRX10399	14	CRX20739	29	CRX21430	12	CRX25724	48
CRX10400	15	CRX20741	29	CRX21430	38	CRX25725	35
CRX11069	3	CRX20743	26	CRX21434	16	CRX25726	35
CRX11895	8	CRX20745	26	CRX21435	18	CRX25727	6
CRX12377	10	CRX20747	3	CRX21436	27	CRX25728	27
CRX13542	10	CRX20749	27	CRX21437	25	CRX25729	27
CRX13975	61	CRX20770	7	CRX21439	30	CRX25730	7
CRX14112	61	CRX20774	6	CRX21444	18	CRX25731	51
CRX15007	38	CRX20817	25	CRX21488	6	CRX25732	31
CRX15009	11	CRX20850	59	CRX21575	42	CRX25732	51
CRX15009	55	CRX20902	35	CRX21576	45	CRX25733	51
CRX16229	61	CRX20908	34	CRX21577	45	CRX25735	51
CRX16331	61	CRX20911	35	CRX21582	45	CRX25736	51
CRX16332	61	CRX20913	35	CRX21583	45	CRX25737	32
CRX16745	61	CRX20914	35	CRX23674	31	CRX25738	52
CRX16989	15	CRX20915	54	CRX23674	49	CRX25739	52
CRX17078	5	CRX20916	36	CRX23674	50	CRX25740	51
CRX17651	52	CRX20918	36	CRX23675	32	CRX25741	32
CRX18109	61	CRX20920	11	CRX24682	63	CRX25741	50
CRX18621	61	CRX20922	36	CRX24684	63	CRX25743	36
CRX18623	61	CRX20924	36	CRX24686	63	CRX26604	24
CRX19706	11	CRX20926	41	CRX24688	63	CRX26614	24
CRX19706	33	CRX20928	41	CRX24700	63	CRX26615	25
CRX20011	20	CRX20930	42	CRX25698	22	CRX26616	25
CRX20013	22	CRX20932	42	CRX25699	33	CRX26658	25
CRX20394	10	CRX20934	43	CRX25702	3	CRX26661	23
CRX20404	6	CRX20936	4	CRX25704	46	CRX26662	23
CRX20406	7	CRX20936	34	CRX25705	33	CRX26663	23
CRX20469	40	CRX20939	4	CRX25706	33	CRX26664	23
CRX20481	20	CRX20941	4	CRX25708	53	CRX26665	23
CRX20483	16	CRX20944	5	CRX25710	34	CRX26666	24
CRX20488	29	CRX20946	5	CRX25711	38	CRX26667	24
CRX20489	17	CRX21408	17	CRX25712	39	CRX26669	24
CRX20572	26	CRX21410	19	CRX25713	38	CRX26670	24
CRX20573	17	CRX21413	47	CRX25714	4	CRX27777	11
CRX20577	16	CRX21415	47	CRX25715	7	CRX28456	8
CRX20579	54	CRX21416	47	CRX25716	18	CRX29111	18
CRX20581	57	CRX21422	20	CRX25716	38	CRX29112	6
CRX20591	20	CRX21423	31	CRX25717	19	CRX29114	54
CRX20592	12	CRX21423	49	CRX25718	26	CRX29115	27
CRX20593	20	CRX21423	50	CRX25719	4	CRX29119	31
CRX20595	22	CRX21424	21	CRX25719	34	CRX29120	31
CRX20597	16	CRX21425	46	CRX25721	48	CRX29192	28
CRX20735	46	CRX21426	21	CRX25722	47	CRX29194	28

# Index

Part #	Page #	Part #	Page #	Part #	Page #	Part #	Page #
CRX29196	29	CRX29650	9	CRX29834	39	CRX29923	13
CRX29198	19	CRX29652	9	CRX29842	42	CRX29924	28
CRX29200	21	CRX29653	9	CRX29843	43	CRX29925	13
CRX29300	46	CRX29654	3	CRX29844	43	CRX29926	3
CRX29302	47	CRX29655	9	CRX29845	41	CRX29927	13
CRX29304	48	CRX29657	9	CRX29846	41	CRX29928	56
CRX29306	48	CRX29659	22	CRX29847	45	CRX29929	13
CRX29308	37	CRX29661	23	CRX29863	43	CRX29930	53
CRX29309	37	CRX29662	12	CRX29864	33	CRX29932	14
CRX29310	37	CRX29663	15	CRX29865	28	CRX29936	38
CRX29311	37	CRX29665	38	CRX29866	38	CRX29946	15
CRX29313	37	CRX29669	9	CRX29868	4	CRX29946	33
CRX29313	52	CRX29671	8	CRX29868	34	CRX29985	29
CRX29314	37	CRX29702	57	CRX29870	17	CRX29987	29
CRX29315	37	CRX29704	60	CRX29872	17	CRX29991	46
CRX29316	18	CRX29706	53	CRX29874	21	CRX29992	49
CRX29317	20	CRX29708	53	CRX29876	59	CRX29993	48
CRX29318	22	CRX29710	57	CRX29877	59	CRX29995	43
CRX29319	42	CRX29712	53	CRX29878	54	CRX29996	49
CRX29320	19	CRX29714	57	CRX29879	41	CRX29997	19
CRX29321	52	CRX29716	59	CRX29880	8	CRX29998	34
CRX29322	33	CRX29718	54	CRX29881	21	CRX29999	57
CRX29324	10	CRX29720	60	CRX29882	28	CRXDWMB	62
CRX29453	18	CRX29722	58	CRX29884	28	CRXTDB6	62
CRX29470	7	CRX29724	58	CRX29886	28	CRXTDB8	62
CRX29472	27	CRX29725	54	CRX29888	28	CRXTDW14	62
CRX29474	26	CRX29726	57	CRX29889	29	CRXTDW4	62
CRX29476	26	CRX29727	59	CRX29891	30	CRXTDWMB	63
CRX29478	41	CRX29728	59	CRX29901	15	CRXTXW10	62
CRX29480	39	CRX29729	56	CRX29903	15		
CRX29481	40	CRX29730	55	CRX29904	15		
CRX29483	40	CRX29731	55	CRX29905	14		
CRX29525	46	CRX29732	55	CRX29906	13		
CRX29636	58	CRX29733	60	CRX29909	14		
CRX29638	58	CRX29734	55	CRX29911	14		
CRX29640	7	CRX29735	55	CRX29913	5		
CRX29641	60	CRX29736	56	CRX29914	5		
CRX29642	58	CRX29738	56	CRX29915	14		
CRX29643	53	CRX29740	56	CRX29916	5		
CRX29644	12	CRX29741	60	CRX29917	10		
CRX29645	56	CRX29755	36	CRX29918	11		
CRX29646	12	CRX29756	33	CRX29919	39		
CRX29647	58	CRX29783	39	CRX29920	21		
CRX29648	10	CRX29830	39	CRX29921	13		
CRX29649	8	CRX29832	39	CRX29922	31		

**CRS**  
Automotive & Industrial Supply Crest Industries