

TESTING THE NEW PANEL BONDER AND COMPETITION

TESTING THE NEW PANEL BONDER — #CEPB VS. COMPETITION



TEST PANELS PREPARED BY AN INDEPENDENT BODY SHOP.

L.I.P. COLLISION
NORTH WALES, PA. 19454

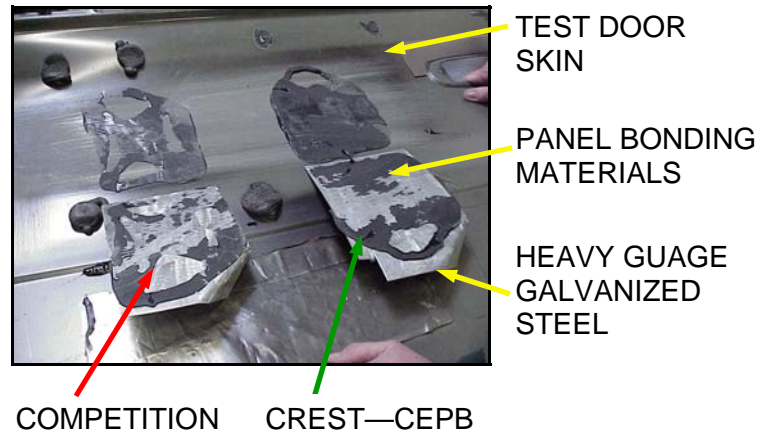
The latest design specifications for **PANEL BONDING** materials by Vehicle Manufacturers call for the bonding material to exhibit “**COHESIVE**” failure rather than “**ADHESIVE**” failure.

Simply put, its is more desirable for the bonding material to “split apart”, consistently rather than “peel off” inconsistently.

TESTING FOR COHESIVE FAILURE VS. ADHESIVE FAILURE

co-he-sion (kō-hē'zhən) *n.* **1.** The act, process, or condition of cohering. **2.** *Physics.* The intermolecular attraction by which the elements of a body are held together.

ad-he-sive (ăd-hē'siv, -ziv) *adj.* **1.** Tending to adhere; sticky. **2.** Gummed so as to adhere. **3.** Tending to persist; difficult if not impossible to shake off. --*ad-he-sive n.* A substance, such as paste or cement, that provides or promotes adhesion. --*ad-he'sive-ly adv.* --**ad-he/sive-ness n.**



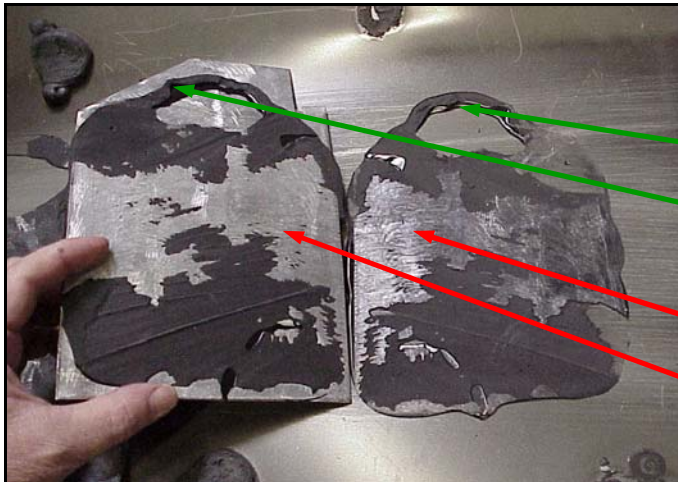
TEST PANELS WERE TORN APART WITH EQUAL FORCE.

BOTH TEST PANELS EXHIBITED EQUAL AND EXCEPTIONAL STRENGTH.

LAP SHEAR TESTING BY AN INDEPENDENT TESTING FACILITY RATES BOTH MATERIALS AT @ **3500 p.s.i.**

TESTING THE NEW PANEL BONDER AND COMPETITION

COHESIVE FAILURE VS. ADHESIVE FAILURE - CLOSE EXAMINATION



EXAMINATION OF **CREST**
PANEL BONDER 3500 # CEPB

COHESIVE FAILURE EXHIBITED

BONDING MATERIAL "SPLIT APART" LEAVING
ADHESIVE STUCK TO BOTH SURFACES.

ADHESIVE FAILURE EXHIBITED

BONDING MATERIAL "PEELED OFF" LEAVING
ADHESIVE STUCK TO ONLY ONE SURFACE.



COHESIVE FAILURE EXHIBITED @ **60%**
ADHESIVE FAILURE EXHIBITED @ **40%**

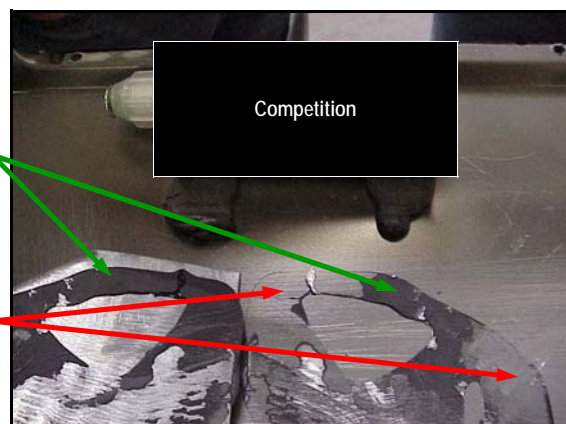


COHESIVE FAILURE EXHIBITED @ **40%**
ADHESIVE FAILURE EXHIBITED @ **60%**



COHESIVE
FAILURE

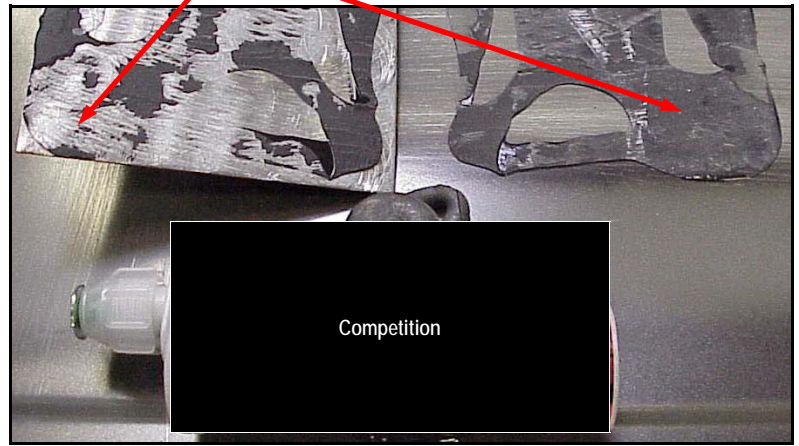
ADHESIVE
FAILURE



Competition

TESTING THE NEW PANEL BONDER AND COMPETITION

COHESIVE FAILURE VS. ADHESIVE FAILURE



CONCLUSION: CREST PANEL BONDER 3500 EXHIBITS VEHICLE MANUFACTURERS' DESIRED CHARACTERISTICS FOR PANEL BONDING MATERIALS

PANEL BONDING TESTING - CREST WORKSHOP TRAINING SEMINAR



PANEL BONDING LINE BEAD SAG TESTS



APPLICATION USING STANDARD HAND OPERATED CAULK GUN.



COMPETITION
CREST
CREST
COMPETITION

TESTING THE NEW PANEL BONDER AND COMPETITION

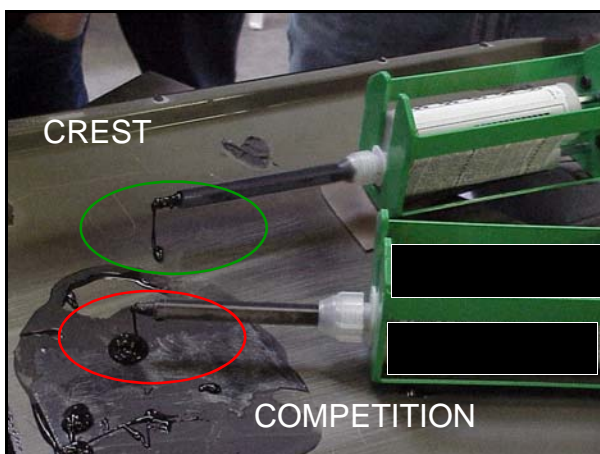
PANEL BONDING BRUSH OUT TESTS



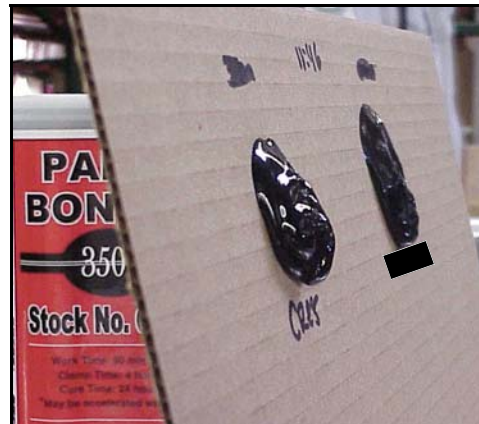
COMPETITION IS HEAVIER AND MUCH MORE DIFFICULT TO BRUSH OUT, DESPITE SAGGING MORE EASILY ON VERTICAL SURFACES



PANEL BONDING DRIP TESTS



PANEL BONDING BLOB SAG TESTS



LARGE BLOB DEPOSITS TO DUPLICATE HIDDEN CENTER PANEL BONDING

CREST CAN BE BUILT HIGHER AND "HANGS" BETTER



BLOBS BEGIN TO LOSE STRUCTURE AFTER 2 MIN. AND SAG BECOMES A DRIP



FLOW STOPS AFTER 3 MINUTES.

CONCLUSION:

- CREST PANEL BONDER 3500 EXHIBITS LESS SAG AND DRIP.
- CREST PANEL BONDER 3500 IS EASIER TO PUMP AND BRUSH OUT THAN THE COMPETITION.