

TOTAL RESTORE

Step 1 - COMPOUND, SWIRL MARK REMOVAL & POLISH / Fresh or Cured Paint



BC-1

The ONE

Universal Paint Finishing System SAND/BUFF/POLISH Fresh or cured paint- body shop safe with "Vari-Cut" Micro Media. A Compound, Swirl Mark Remover and polish - All in 1 Product

**Sanded Paint
1200-2000 Grit**

**Apply The 1
Wool Compound
Pad
1500-2000 RPM**

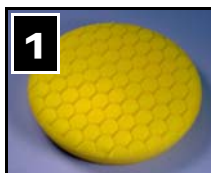


**Apply The 1
Black Foam
Polish Pad
1000-1400 RPM
Finish with Water!**



**Sanded Paint
2000 Grit
or Finer**

**Apply The 1
Yellow Foam
Compound Pad
1200-1800 RPM**



**Apply The 1
Black Foam
Polish Pad
1000-1400 RPM
Finish with Water!**



**Low Gloss -
Not Sanded**

**Apply The 1
Black Foam
Polish Pad
1000-1400 RPM**



**Tech Tips: Mist Pad or Buffing Surface with
Water for Enhanced Workability and
Ultimate Gloss! - The 1 LOVES WATER!!!**

Do Not Apply in Direct Sunlight!
Immediately Clean Up Easily with Water!
Do Not Allow Compound Residue to Dry Hard!

■ The 1 - Quart # BC-1 ■ Wool Compound Pad # QWC
■ Black Foam Polish Pad # QFP ■ Backing Plate # QUBP ■ Yellow Foam Compound Pad # QFC

Step 2 - ENHANCED GLOSS / UV PROTECTION / Fresh or Cured Paint



BF-2

Foto Finish Final Glaze

Long Lasting / Enhanced
Gloss and UV Protection

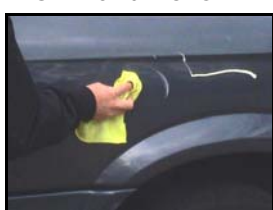
- EZ on / EZ off
- Machine or Hand Apply
- Body Shop Safe
- No more fingerprints
- Beads Water for weeks!
- Advanced Chemistry provides a Show Car Finish with no oily residue / great for overalls
- A perfect companion product to # BC-1, The ONE (see above)
- Perfect for Enhancing Gloss after compound and polish on painted panels!

Machine Polish - 1000-1400 RPM

Hand Apply



OR Hand Polish



Buff to a Brilliant Shine



BS-3

Slixter Quick Shine

Provides a Brilliant
Shine in Record Time!

- Slixter Quick Shines and Cleans in Seconds
- Body Shop Safe
- No oily residue
- Excellent on Fiberglass!
- Beads Water for weeks! / will not streak or fingerprint
- Removes Compound Residue from Textured Surfaces
- Spray Polish directly on Surface wipe on wipe off immediately to achieve a high shine in one step!
- Perfect for touching up adjacent panels you didn't paint so the whole car looks great!

Spray or Hand Apply



Hand Polish & Buff



Brilliant Shine



Keep all products
from freezing!



To see our Online Catalog visit:

www.CRESTEASTCOAST.com

To Order Call us toll free at:

866-458-9009



Credit Cards Accepted!

